



[Go to Product page](#)

Datasheet for ABIN574471
anti-RPL39L antibody (AA 1-52)

3 Images

Overview

Quantity:	50 µg
Target:	RPL39L
Binding Specificity:	AA 1-52
Reactivity:	Human
Host:	Mouse
Clonality:	Monoclonal
Application:	ELISA, Immunohistochemistry (IHC), Immunohistochemistry (Paraffin-embedded Sections) (IHC (p)), Western Blotting (WB)

Product Details

Brand:	IHC-plus™
Immunogen:	RPL39L (AAH12328, 1 a.a. ~ 52 a.a) full length recombinant protein with GST tag. MW of the GST tag alone is 26 KDa. Type of Immunogen: Recombinant protein
Clone:	4A8-1B6
Isotype:	IgG1 kappa
Purification:	Purified from ascites by Protein A

Target Details

Target:	RPL39L
---------	--------

Target Details

Alternative Name: RPL39L ([RPL39L Products](#))

Background: Name/Gene ID: RPL39L

Synonyms: RPL39L, 60S ribosomal protein L39-like, 60S ribosomal protein L39-2, L39-2, Ribosomal protein L39-like 1, Ribosomal protein L39-like, RPL39L1

Gene ID: 116832

UniProt: [P62891](#)

Application Details

Application Notes: Approved: ELISA, IHC, IHC-P (5 µg/mL), WB

Usage: Western Blot (Cell lysate) - positive control HL-60. Sandwich ELISA (Recombinant protein).

Comment: Target Species of Antibody: Human

Restrictions: For Research Use only

Handling

Format: Liquid

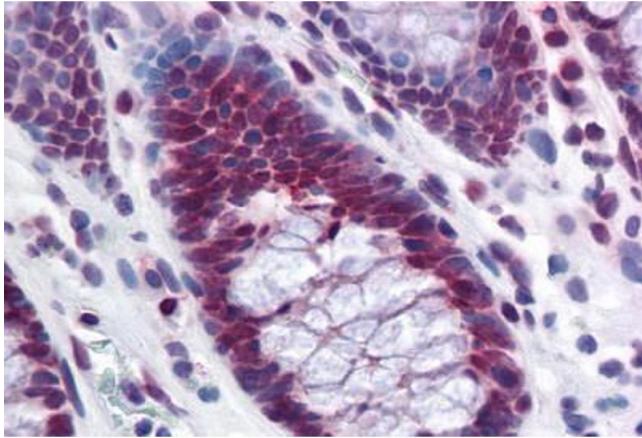
Concentration: Lot specific

Buffer: PBS, pH 7.4

Handling Advice: Aliquot to Avoid freeze/thaw cycles.

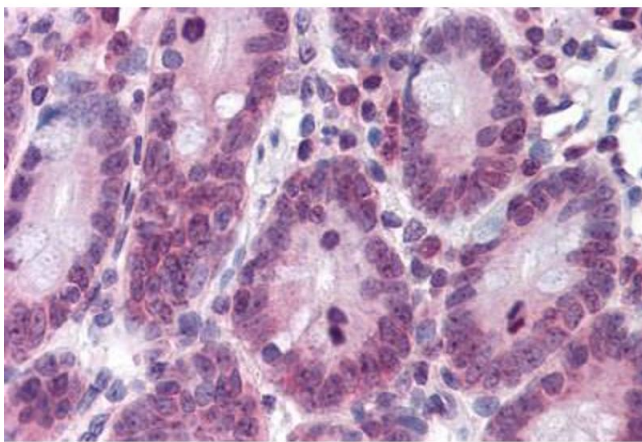
Storage: -20 °C

Storage Comment: Store at -20°C. Aliquot to avoid freeze/thaw cycles.



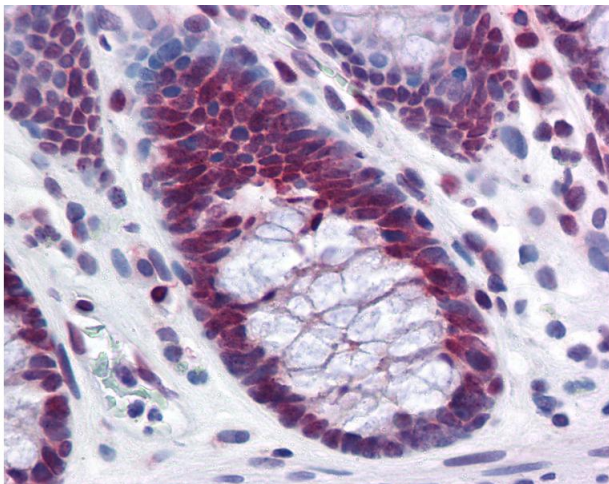
Immunohistochemistry (Formalin-fixed Paraffin-embedded Sections)

Image 1. Human Colon: Formalin-Fixed, Paraffin-Embedded (FFPE)



Immunohistochemistry (Formalin-fixed Paraffin-embedded Sections)

Image 2. Human Small Intestine: Formalin-Fixed, Paraffin-Embedded (FFPE)



Immunohistochemistry

Image 3. Anti-RPL39L antibody IHC of human colon. Immunohistochemistry of formalin-fixed, paraffin-embedded tissue after heat-induced antigen retrieval. Antibody concentration 5 ug/ml.