



[Go to Product page](#)

Datasheet for ABIN574479

anti-TUBB2A antibody (AA 1-446)

3 Images

Overview

Quantity:	50 µg
Target:	TUBB2A
Binding Specificity:	AA 1-446
Reactivity:	Human, Mouse, Rat
Host:	Mouse
Clonality:	Monoclonal
Conjugate:	This TUBB2A antibody is un-conjugated
Application:	Western Blotting (WB), ELISA, Immunohistochemistry (Paraffin-embedded Sections) (IHC (p)), Immunohistochemistry (IHC)

Product Details

Brand:	IHC-plus™
Immunogen:	TUBB2A (AAH01194, 1 a.a. ~ 446 a.a) full-length recombinant protein with GST tag. MW of the GST tag alone is 26 KDa. Type of Immunogen: Recombinant protein
Clone:	2B2
Isotype:	IgG2a kappa
Purification:	Purified from ascites by Protein A

Target Details

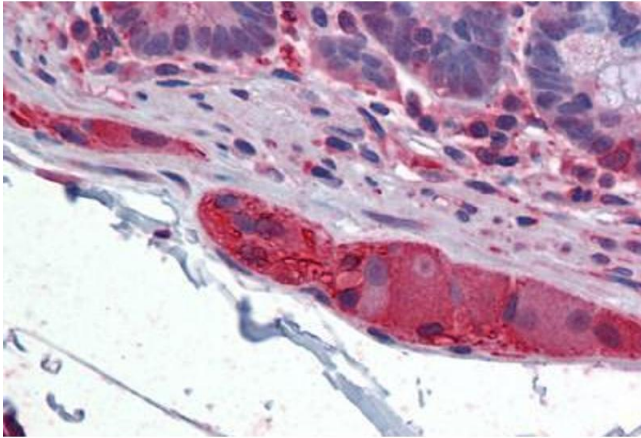
Target:	TUBB2A
Alternative Name:	TUBB2A / Tubulin beta 2A (TUBB2A Products)
Background:	Name/Gene ID: TUBB2A Family: Tubulin Synonyms: TUBB2A, Class IIa beta-tubulin, DJ40E16.7, TUBB2, Tubulin beta-2A chain, Tubulin, beta 2, Tubulin, beta 2A, Tubulin, beta 2A class IIa, Beta-Tubulin, Tubulin beta-2 chain, Tubulin, beta polypeptide 2, Tubulin, beta polypeptide
Gene ID:	7280
UniProt:	Q13885
Pathways:	Microtubule Dynamics , M Phase

Application Details

Application Notes:	Approved: ELISA, IHC, IHC-P (5 µg/mL), WB Usage: Western Blot (Cell lysate) - positive control PC-12. Western Blot (Cell lysate) - positive control Raw 264. Western Blot (Cell lysate) - positive control Jurkat. Western Blot (Cell lysate) - positive control NIH/3T3. Western Blot (Transfected lysate) - positive control transfected 293T cell line.
Comment:	Target Species of Antibody: Human
Restrictions:	For Research Use only

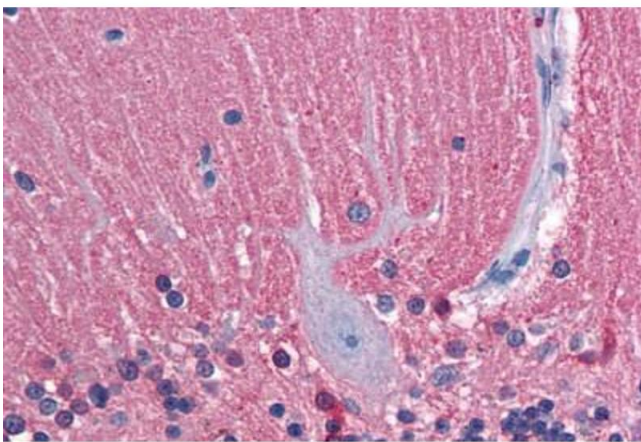
Handling

Format:	Liquid
Concentration:	Lot specific
Buffer:	PBS, pH 7.4
Handling Advice:	Aliquot to Avoid freeze/thaw cycles.
Storage:	-20 °C
Storage Comment:	Store at -20°C. Aliquot to avoid freeze/thaw cycles.



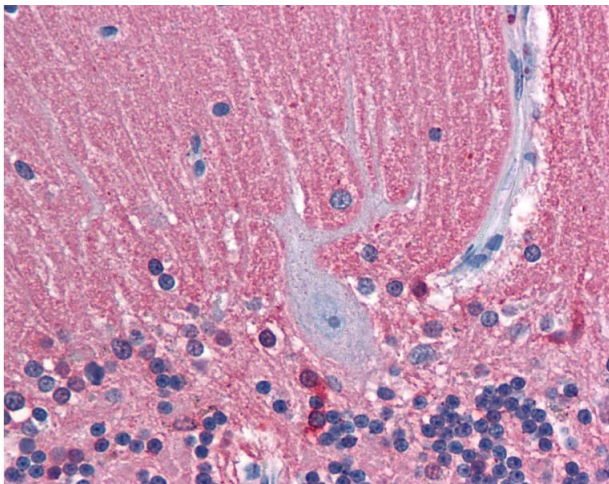
Immunohistochemistry (Formalin-fixed Paraffin-embedded Sections)

Image 1. Human Small Intestine, submucosal plexus: Formalin-Fixed, Paraffin-Embedded (FFPE)



Immunohistochemistry (Formalin-fixed Paraffin-embedded Sections)

Image 2. Human Brain, Cerebellum: Formalin-Fixed, Paraffin-Embedded (FFPE)



Immunohistochemistry

Image 3. Anti-TUBB2A antibody IHC of human brain, cerebellum. Immunohistochemistry of formalin-fixed, paraffin-embedded tissue after heat-induced antigen retrieval. Antibody concentration 5 ug/ml.