

Datasheet for ABIN574492
anti-BMP7 antibody (AA 165-214)

3 Images

[Go to Product page](#)

Overview

Quantity:	50 µg
Target:	BMP7
Binding Specificity:	AA 165-214
Reactivity:	Human, Mouse, Rat, Monkey, Guinea Pig
Host:	Rabbit
Clonality:	Polyclonal
Application:	Western Blotting (WB), Immunohistochemistry (IHC), Immunohistochemistry (Paraffin-embedded Sections) (IHC (p))

Product Details

Brand:	IHC-plus™
Immunogen:	Synthetic peptide located between aa165-214 of rat Bmp7. Percent identity by BLAST analysis: Human, Gorilla, Gibbon, Monkey, Marmoset, Mouse, Rat (100%), Galago, Hamster, Panda, Dog, Bovine, Rabbit, Horse, Pig, Opossum, Turkey, Chicken (92%), Elephant, Bat, Guinea pig, Platypus (85%). Type of Immunogen: Synthetic peptide
Specificity:	Human BMP7
Predicted Reactivity:	Percent identity by BLAST analysis: Human (100%) Mouse, Rat, Dog, Bovine, Rabbit, Horse, Pig, Chicken (92%) Guinea pig (85%).

Target Details

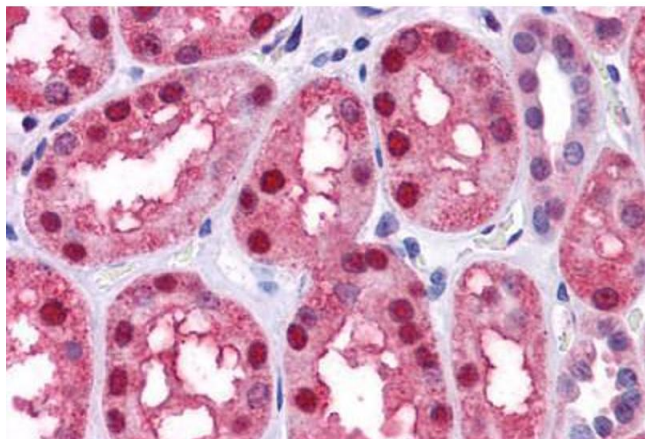
Target:	BMP7
Alternative Name:	BMP7 / BMP-7 (BMP7 Products)
Background:	Name/Gene ID: BMP7 Family: TGF beta Synonyms: BMP7, Bone morphogenetic protein 7, Eptotermin alfa, OP-1, OP1, Osteogenic protein 1, BMP-7
Gene ID:	655
UniProt:	P18075
Pathways:	Steroid Hormone Mediated Signaling Pathway , Stem Cell Maintenance

Application Details

Application Notes:	Approved: IHC, IHC-P (5 µg/mL), WB
Comment:	Target Species of Antibody: Rat
Restrictions:	For Research Use only

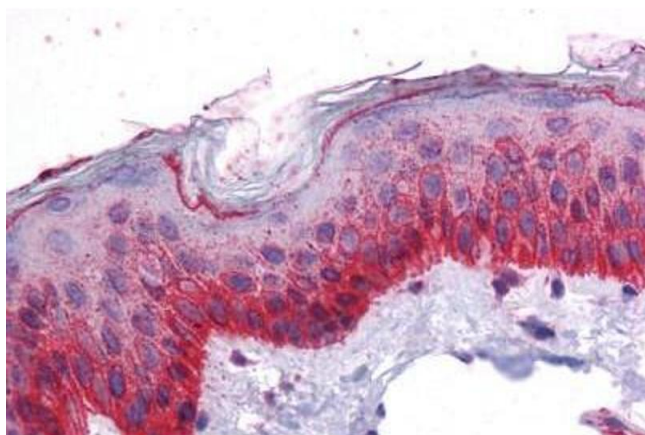
Handling

Format:	Lyophilized
Reconstitution:	Distilled water
Concentration:	Lot specific
Buffer:	Lyophilized from PBS, 2 % sucrose.
Handling Advice:	Avoid freeze-thaw cycles.
Storage:	4 °C,-20 °C
Storage Comment:	Long term: -20°C, the use of 50% glycerol is recommended if storing aliquots in -20°C for long term use (up to 1 year) Short term (less than 1 week): 4°C. Avoid freeze-thaw cycles.



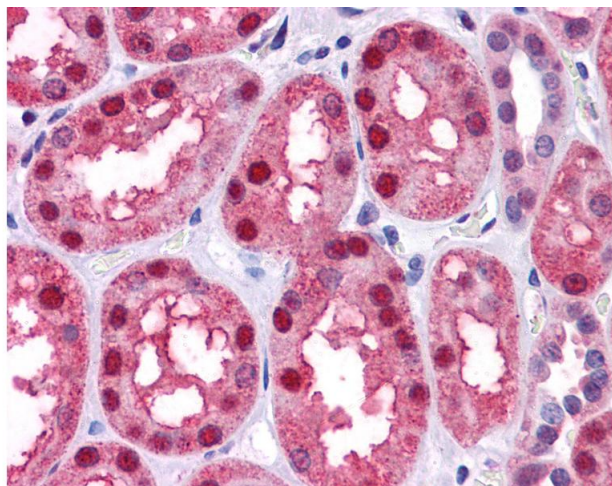
Immunohistochemistry (Formalin-fixed Paraffin-embedded Sections)

Image 1. Human Kidney: Formalin-Fixed, Paraffin-Embedded (FFPE)



Immunohistochemistry (Formalin-fixed Paraffin-embedded Sections)

Image 2. Human Skin: Formalin-Fixed, Paraffin-Embedded (FFPE)



Immunohistochemistry

Image 3. Anti-BMP7 antibody IHC of human kidney. Immunohistochemistry of formalin-fixed, paraffin-embedded tissue after heat-induced antigen retrieval. Antibody concentration 5 ug/ml. This image was taken for the unconjugated form of this product. Other form ...