



[Go to Product page](#)

Datasheet for ABIN574495
anti-KLF2 antibody (AA 216-265)

4 Images

Overview

Quantity:	50 µg
Target:	KLF2
Binding Specificity:	AA 216-265
Reactivity:	Human, Pig, Zebrafish (Danio rerio)
Host:	Rabbit
Clonality:	Polyclonal
Conjugate:	This KLF2 antibody is un-conjugated
Application:	Western Blotting (WB), Immunohistochemistry (IHC), Immunohistochemistry (Paraffin-embedded Sections) (IHC (p))

Product Details

Brand:	IHC-plus™
Immunogen:	Synthetic peptide located between aa216-265 of human KLF2 (Q9Y5W3, NP_057354). Percent identity by BLAST analysis: Human, Chimpanzee, Gibbon, Monkey, Galago, Pig (100%), Marmoset, Mouse, Rat, Opossum, Guinea pig, Platypus (92%), Xenopus (90%), Salmon (85%). Type of Immunogen: Synthetic peptide
Specificity:	Human KLF2
Predicted Reactivity:	Percent identity by BLAST analysis: Human, Pig (100%) Mouse, Rat, Guinea pig (92%).
Purification:	Immunoaffinity purified

Target Details

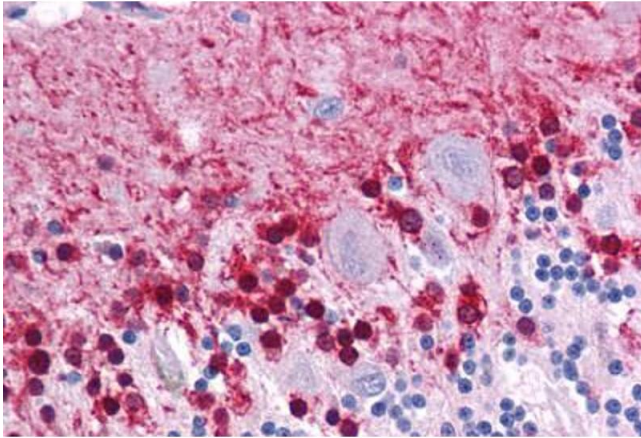
Target:	KLF2
Alternative Name:	KLF2 (KLF2 Products)
Background:	Name/Gene ID: KLF2 Synonyms: KLF2, Krueppel-like factor 2, Kruppel-like factor LKLF, Kruppel-like factor 2 (lung), Lung krueppel-like factor, LKLF
Gene ID:	10365
NCBI Accession:	NP_057354
UniProt:	Q9Y5W3

Application Details

Application Notes:	Approved: IHC, IHC-P (5 µg/mL), WB (0.2 - 1 µg/mL) Usage: Western Blot: Suggested dilution at 1 µg/mL in 5 % skim milk / PBS buffer, and HRP conjugated anti-Rabbit IgG should be diluted in 1: 50,000 - 100,000 as secondary antibody.
Comment:	Target Species of Antibody: Human
Restrictions:	For Research Use only

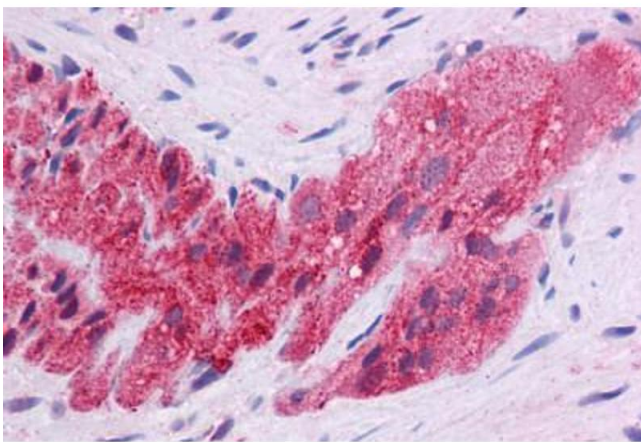
Handling

Format:	Lyophilized
Reconstitution:	Distilled water
Concentration:	Lot specific
Buffer:	Lyophilized from PBS with 2 % sucrose
Handling Advice:	Avoid repeat freeze-thaw cycles.
Storage:	4 °C, -20 °C
Storage Comment:	Long term: -20°C, the use of 50% glycerol is recommended if storing aliquots in -20°C for long term use (up to 1 year) Short term (less than 1 week): 4°C. Avoid freeze-thaw cycles.



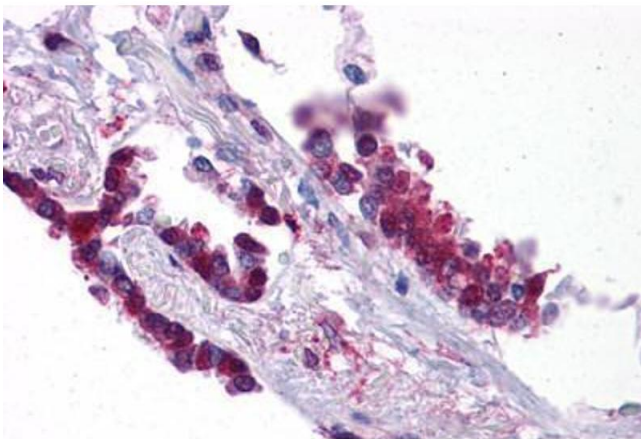
Immunohistochemistry (Formalin-fixed Paraffin-embedded Sections)

Image 1. Human Brain, Cerebellum: Formalin-Fixed, Paraffin-Embedded (FFPE)



Immunohistochemistry (Formalin-fixed Paraffin-embedded Sections)

Image 2. Human Colon, Myenteric Plexus: Formalin-Fixed, Paraffin-Embedded (FFPE)



Immunohistochemistry (Formalin-fixed Paraffin-embedded Sections)

Image 3. Human Lung: Formalin-Fixed, Paraffin-Embedded (FFPE)

Please check the [product details page](#) for more images. Overall 4 images are available for ABIN574495.