

Datasheet for ABIN576733
anti-Fibrinogen antibody (FITC)[Go to Product page](#)

1 Image

Overview

Quantity:	1 mL
Target:	Fibrinogen
Reactivity:	Human, Mouse, Rat
Host:	Sheep
Clonality:	Polyclonal
Conjugate:	This Fibrinogen antibody is conjugated to FITC
Application:	ELISA, Immunohistochemistry (IHC), Immunofluorescence (IF), Immunohistochemistry (Paraffin-embedded Sections) (IHC (p)), Immunohistochemistry (Frozen Sections) (IHC (fro))

Product Details

Immunogen:	Native. Type of Immunogen: Native protein
Specificity:	Recognizes human fibrinogen, a complex ~340kD hetero-hexameric (di-trimeric) glycoprotein consisting of 3 pairs of alpha, beta and gamma chains linked by a series of 29 disulphide bonds. The six chains are arranged in such a way that all the N-Terminal ends adjoin to form a central with two trimeric coiled coil structures connecting to outer D domains. Fibrinogen plays an important role in the coagulation process with the D and E domains interacting via the C-Terminal ends of the alpha chains during fibrin clot cross-linking. Shows minimal cross-reactivity with related serum proteins. Fibrinogen has been identified as a ferritin binding protein in the horse. Has been successfully as a capture reagent for ferritin - anti ferritin IgG complexes in horse plasma to evaluate the antibody response to ferritin by ELISA.

Product Details

Purification: Affinity purified

Target Details

Target: Fibrinogen

Abstract: [Fibrinogen Products](#)

Application Details

Application Notes: Approved: ELISA, IF (1:10 - 1:100), IHC, IHC-Fr, IHC-P

Usage: The applications listed have been tested for the unconjugated form of this product.
Other forms have not been tested.

Comment: Target Species of Antibody: Human

Restrictions: For Research Use only

Handling

Format: Liquid

Concentration: Lot specific

Buffer: PBS, pH 7.4, 0.09 % sodium azide.

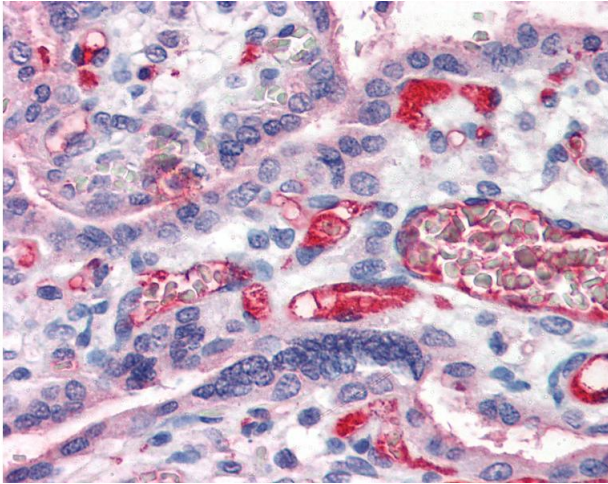
Preservative: Sodium azide

Precaution of Use: This product contains Sodium azide: a POISONOUS AND HAZARDOUS SUBSTANCE which should be handled by trained staff only.

Handling Advice: Avoid repeated freezing and thawing.

Storage: 4 °C,-20 °C

Storage Comment: 4°C or -20°C, Avoid freeze-thaw cycles.



Immunohistochemistry

Image 1. Anti-Fibrinogen antibody IHC of human placenta. Immunohistochemistry of formalin-fixed, paraffin-embedded tissue after heat-induced antigen retrieval. Antibody concentration 5 ug/ml. This image was taken for the unconjugated form of this product. Ot ...