



[Go to Product page](#)

Datasheet for ABIN576886 anti-Cd1w2 antibody (PE)

1 Image

Overview

Quantity:	100 tests
Target:	Cd1w2
Reactivity:	Cow, Goat, Sheep, Dog, Horse
Host:	Mouse
Clonality:	Monoclonal
Conjugate:	This Cd1w2 antibody is conjugated to PE
Application:	Flow Cytometry (FACS)

Product Details

Immunogen:	Type of Immunogen: Native protein
Clone:	CC20
Isotype:	IgG2a
Specificity:	Recognizes the bovine CD1w2 cell surface antigen, a glycoprotein heterodimer of 12kD and 46kD. CD1w2 is expressed by cortical thymocytes and a minority of medullary thymocytes, with a pattern similar to antibodies of the CD1b cluster in humans.
Purification:	Affinity purified

Target Details

Target:	Cd1w2
---------	-------

Target Details

Abstract: [Cd1w2 Products](#)

Application Details

Application Notes: Approved: Flo (1:1 - 1:5)

Usage: Flow Cytometry: Use 10 µL of the suggested working dilution to label 10⁶ cells in 100 µL. Method sheets are available on request. The applications listed have been tested for the unconjugated form of this product. Other forms have not been tested.

Comment: Target Species of Antibody: Bovine

Restrictions: For Research Use only

Handling

Format: Lyophilized

Reconstitution: Distilled Water.

Concentration: Lot specific

Buffer: Lyophilized, PBS, pH 7.4, 0.09 % sodium azide, 1 % BSA.

Preservative: Sodium azide

Precaution of Use: This product contains Sodium azide: a POISONOUS AND HAZARDOUS SUBSTANCE which should be handled by trained staff only.

Storage: 4 °C

Storage Comment: 4°C, avoid freezing.

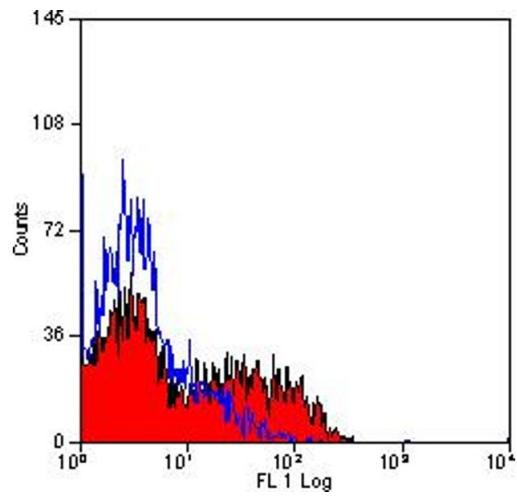


Image 1.