



[Go to Product page](#)

Datasheet for ABIN576904  
**anti-SIGLEC7 antibody (PE)**

1 Image

Overview

Quantity:	100 tests
Target:	SIGLEC7
Reactivity:	Human
Host:	Mouse
Clonality:	Monoclonal
Conjugate:	This SIGLEC7 antibody is conjugated to PE
Application:	Immunohistochemistry (IHC), Flow Cytometry (FACS), Immunohistochemistry (Frozen Sections) (IHC (fro))

Product Details

Immunogen:	Monocyte-derived dendritic cells.  Type of Immunogen: Cells
Clone:	5-386
Isotype:	IgG1
Specificity:	Specific for human CDw328, a type I transmembrane glycoprotein and member of the Siglec (sialic acid binding Ig-like lectin) family, designated Siglec-7, originally identified as an inhibitory NK cell receptor (NKR) and negative regulator of NK activation, attributed to ITIM recruitment of SHP-1 phosphatase. CDw328 is expressed predominantly by natural killer cells (NK) and to a lesser extent by monocytes and granulocytes and, like Siglec-5 (CD170), has been shown to bind to sialylated ligands of targets through recognition of sialic acid in both the alpha-2,3- and alpha-2,6- glycosidic linkage.

## Product Details

---

Purification: Affinity purified

## Target Details

---

Target: SIGLEC7

Alternative Name: SIGLEC7 / CD328 ([SIGLEC7 Products](#))

Background: Name/Gene ID: SIGLEC7  
Family: Immunoglobulin

Synonyms: SIGLEC7, AIRM-1, AIRM1, CD328 antigen, CDw328, CD328, D-siglec, QA79, SIGLEC-7, QA79 membrane protein

Gene ID: 27036

UniProt: [Q9Y286](#)

## Application Details

---

Application Notes: Approved: Flo (1:1), IHC, IHC-Fr

Usage: The applications listed have been tested for the unconjugated form of this product. Other forms have not been tested. Flow Cytometry: Use 10 µL of the suggested working dilution to label 1x10<sup>6</sup> cells in 100 µL. Method sheets are available on request.

Comment: Target Species of Antibody: Human

Restrictions: For Research Use only

## Handling

---

Format: Lyophilized

Reconstitution: Reconstitute in 1 mL distilled water.

Concentration: Lot specific

Buffer: Lyophilized powder from PBS, pH 7.4, 0.09 % sodium azide, 1 % BSA, 5 % sucrose.

Preservative: Sodium azide

Precaution of Use: This product contains Sodium azide: a POISONOUS AND HAZARDOUS SUBSTANCE which should be handled by trained staff only.

## Handling

---

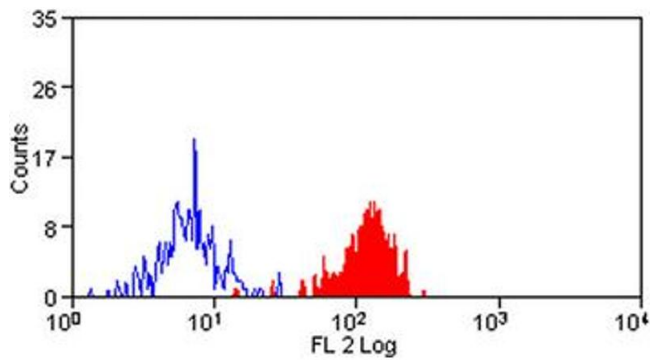
Handling Advice: avoid freezing

Storage: 4 °C

Storage Comment: 4°C, avoid freezing.

## Images

---



**Image 1.**