

Datasheet for ABIN577054

anti-DICER1 antibody



[Go to Product page](#)

1 Image 3 Publications

Overview

Quantity:	100 µg
Target:	DICER1
Reactivity:	Human, Mouse, Rat, Lizard, Zebrafish (Danio rerio)
Host:	Rabbit
Clonality:	Polyclonal
Conjugate:	This DICER1 antibody is un-conjugated
Application:	Western Blotting (WB), Immunohistochemistry (IHC), ELISA, Immunoprecipitation (IP), Chromatin Immunoprecipitation (ChIP)

Product Details

Immunogen:	Synthetic Peptide
Isotype:	IgG
Specificity:	Greater than 95%
Purification:	Affinity purified
Purity:	> 98 %

Target Details

Target:	DICER1
Alternative Name:	Dicer (DICER1 Products)
Background:	High affinity rabbit derivative of 13D6. Dicer is an endoribonuclease in the RNase III family that

Target Details

cleaves double-stranded RNA (dsRNA) and pre-microRNA (miRNA) into short double-stranded RNA fragments called small interfering RNA (siRNA) about 20-25 nucleotides long, usually with a two-base overhang on the 3' end. Dicer contains two RNase III domains and one PAZ domain, the distance between these two regions of the molecule is determined by the length and angle of the connector helix and determines the length of the siRNAs it produces. Dicer catalyzes the first step in the RNA interference pathway and initiates formation of the RNA-induced silencing complex (RISC), whose catalytic component argonaute is an endonuclease capable of degrading messenger RNA (mRNA) whose sequence is complementary to that of the siRNA guide strand. The human version of this gene is DICER1. In recent work, CLONEGENE has developed a rabbit antibody (R13D6) against a highly conserved peptide in human Dicer. This antibody reacts with human, mouse, rat, cow, dog and lizard Dicer. The sequence of the peptide is confidential but we are happy to advise you if this antibody will work on Dicer from your species of interest. Working conditions are 1/20,000 for IHC and 1/5000 for western blot making this a very economical purchase. R13D6 was generated against the same synthetic peptide that was used to generate our anti-Dicer 13D6 and 4A6 mouse monoclonals. Indeed R12D6 is superior to 4A6 in IHC on archival paraffin sections (see image of R13D6 on FFPE lung tumor section). R13D6 is provided as an affinity-purified IgG (1mg/ml).

Pathways: [Regulatory RNA Pathways](#), [Stem Cell Maintenance](#), [Ribonucleoprotein Complex Subunit Organization](#)

Application Details

Application Notes: Works on IHC at 1/10,000

Restrictions: For Research Use only

Handling

Format: Liquid

Concentration: 1mg/ml

Buffer: PBS/glycerol

Storage: -20 °C

Publications

Product cited in: Wang, McAllister, Bailey, Scott, Hendley, Leach, Ghosh: "Dicer is required for maintenance of adult pancreatic acinar cell identity and plays a role in Kras-driven pancreatic neoplasia." in:

PLoS ONE, Vol. 9, Issue 11, pp. e113127, (2014) ([PubMed](#)).

Caffrey, Ingoldsby, Wall, Webber, Dinneen, Murillo, Inderhaug, Newell, Gupta, Callagy: "Prognostic significance of deregulated dicer expression in breast cancer." in: **PLoS ONE**, Vol. 8, Issue 12, pp. e83724, (2014) ([PubMed](#)).

Jafarnejad, Sjoestroem, Ardekani, Martinka, Li: "Reduced expression of nuclear Dicer correlates with melanoma progression." in: **Pigment cell & melanoma research**, Vol. 26, Issue 1, pp. 147-9, (2012) ([PubMed](#)).

Images

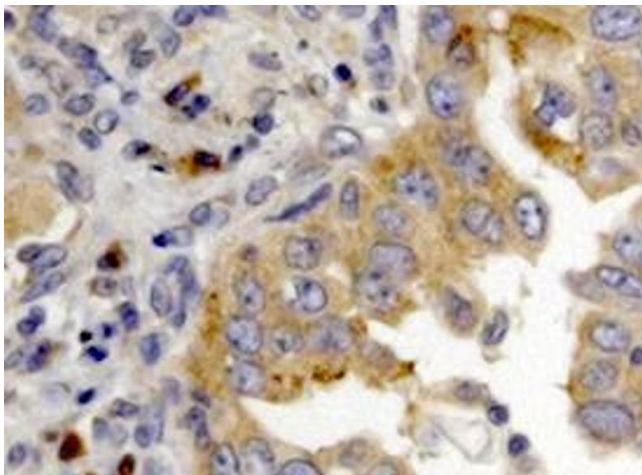


Image 1. Dicer expression in lung tumor via R13D6