



[Go to Product page](#)

Datasheet for ABIN5773847

anti-HIST3H2A antibody (acLys5)

6 Images

Overview

Quantity:	50 µg
Target:	HIST3H2A
Binding Specificity:	acLys5
Reactivity:	Human
Host:	Rabbit
Clonality:	Polyclonal
Conjugate:	This HIST3H2A antibody is un-conjugated
Application:	Western Blotting (WB), ELISA, Immunofluorescence (IF), ChIP DNA-Sequencing (ChIP-seq), Chromatin Immunoprecipitation (ChIP), Dot Blot (DB)

Product Details

Purpose:	Rabbit polyclonal antibody raised against synthetic peptide of Histone H2A (K5ac).
Immunogen:	A synthetic peptide (conjugated with KLH) corresponding to Histone H2A, acetylated at lysine 5.
Cross-Reactivity:	Human

Target Details

Target:	HIST3H2A
Alternative Name:	HIST3H2A (HIST3H2A Products)
Background:	Full Gene Name: histone cluster 3, H2a Synonyms: MGC3165

Target Details

Gene ID: 92815

Application Details

Application Notes: ELISA (1:4000)
Western Blot (1:1000)
ChIP (0.5-1 μ L/ChIP)
Dot Blot (1:5000)
Immunofluorescence (1:500)
The optimal working dilution should be determined by the end user.

Restrictions: For Research Use only

Handling

Format: Liquid

Buffer: In PBS (0.05 % sodium azide, 0.05 % proclin 300).

Preservative: ProClin, Sodium azide

Precaution of Use: This product contains ProClin and Sodium azide: POISONOUS AND HAZARDOUS SUBSTANCES which should be handled by trained staff only.

Storage: -20 °C,-80 °C

Storage Comment: Store at -20°C. For long term storage store at -80°C.
Aliquot to avoid repeated freezing and thawing.

Images

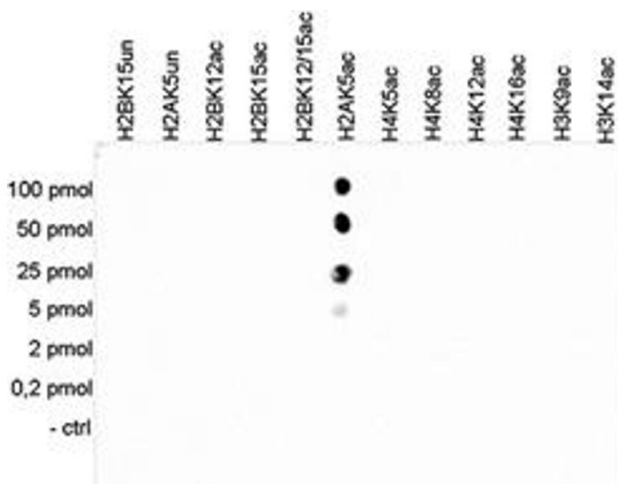


Image 1. Cross reactivity test using the Histone H2A (K5ac) antibody. Dot Blot analysis was performed with peptides containing other histone acetylations and the unmodified H2AK5. One hundred to 0.2 pmol of the respective peptides were spotted on a membrane. The antibody was used at a dilution of 1:5000. The figure shows a high specificity of the antibody for the modification of interest.

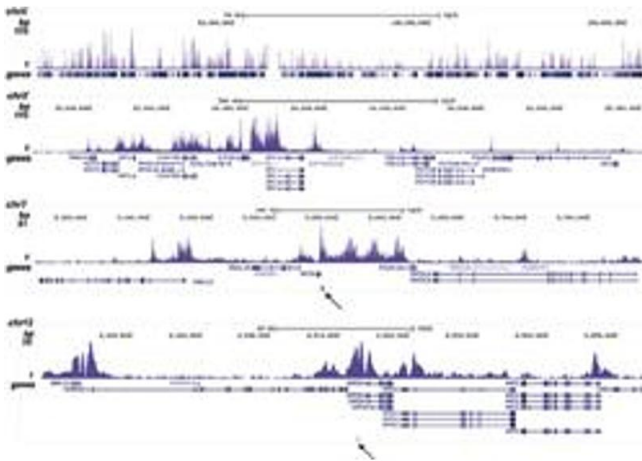
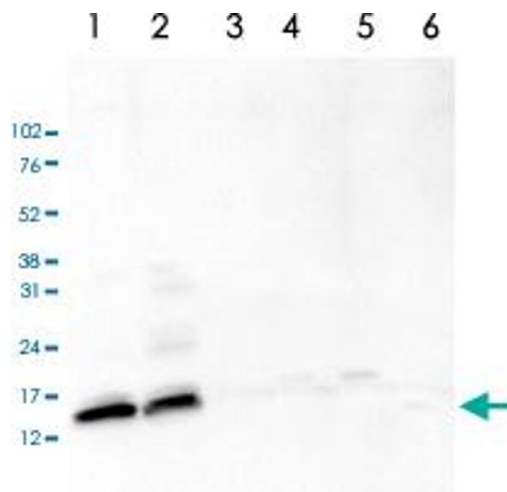


Image 2. ChIP was performed on sheared chromatin from 1.5 million HeLaS3 cells using antibody. The figure shows the enrichment along the complete sequence and a 1 Mb region of the X-chromosome and in genomic regions of chromosome 7, surrounding the ACTB gene, and of chromosome 12, surrounding the GAPDH gene. The position of the amplicon used for ChIP-qPCR is indicated by an arrow.



Western Blotting

Image 3. Western Blot analysis of (1) 25 ug whole cell extracts of Hela cells, (2) 15 ug histone extracts of Hela cells, (3) 1 ug of recombinant histone H2A, (4) 1 ug of recombinant histone H2B, (5) 1 ug of recombinant histone H3, (6) 1 ug of recombinant histone H4.

Please check the [product details page](#) for more images. Overall 6 images are available for ABIN5773847.