

Datasheet for ABIN5773852
anti-HIST1H3A antibody (acLys27)

7 Images

[Go to Product page](#)

Overview

Quantity:	50 µg
Target:	HIST1H3A
Binding Specificity:	acLys27
Reactivity:	Human, Mouse, Rat, Arabidopsis
Host:	Rabbit
Clonality:	Polyclonal
Conjugate:	This HIST1H3A antibody is un-conjugated
Application:	ELISA, Western Blotting (WB), Immunofluorescence (IF), Chromatin Immunoprecipitation (ChIP), Dot Blot (DB), ChIP DNA-Sequencing (ChIP-seq)

Product Details

Purpose:	Rabbit polyclonal antibody raised against synthetic peptide of Histone H3 (K27ac).
Immunogen:	A synthetic peptide (conjugated with KLH) corresponding to Histone H3, acetylated at lysine 27.
Cross-Reactivity:	Arabidopsis, Human, Mouse, Rat

Target Details

Target:	HIST1H3A
Alternative Name:	HIST1H3A (HIST1H3A Products)
Background:	Full Gene Name: histone cluster 1, H3a Synonyms: H3/A,H3FA

Target Details

Gene ID: 8350

Application Details

Application Notes:	ELISA (1:500)
	Western Blot (1:1000)
	ChIP (1 µg/IP)
	Dot Blot (1:20000)
	Immunofluorescence (1:500)
	The optimal working dilution should be determined by the end user.
Restrictions:	For Research Use only

Handling

Format:	Liquid
Buffer:	In PBS (0.05 % sodium azide, 0.05 % proclin 300).
Preservative:	ProClin, Sodium azide
Precaution of Use:	This product contains ProClin and Sodium azide: POISONOUS AND HAZARDOUS SUBSTANCES which should be handled by trained staff only.
Storage:	-20 °C,-80 °C
Storage Comment:	Store at -20°C. For long term storage store at -80°C. Aliquot to avoid repeated freezing and thawing.

Images

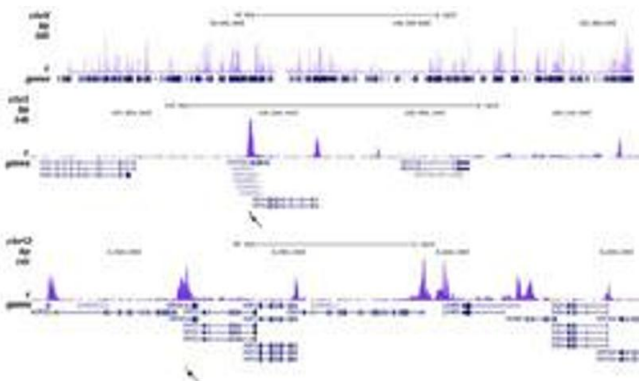


Image 1. ChIP was performed on sheared chromatin from 100,000 K562 cells using antibody. The figure shows the peak distribution along the complete human X-chromosome and the peak distribution in two regions surrounding the EIF4A2 and GAPDH positive control genes, respectively. The position of the PCR amplicon, used for validating the ChIP assay is indicated with an arrow.

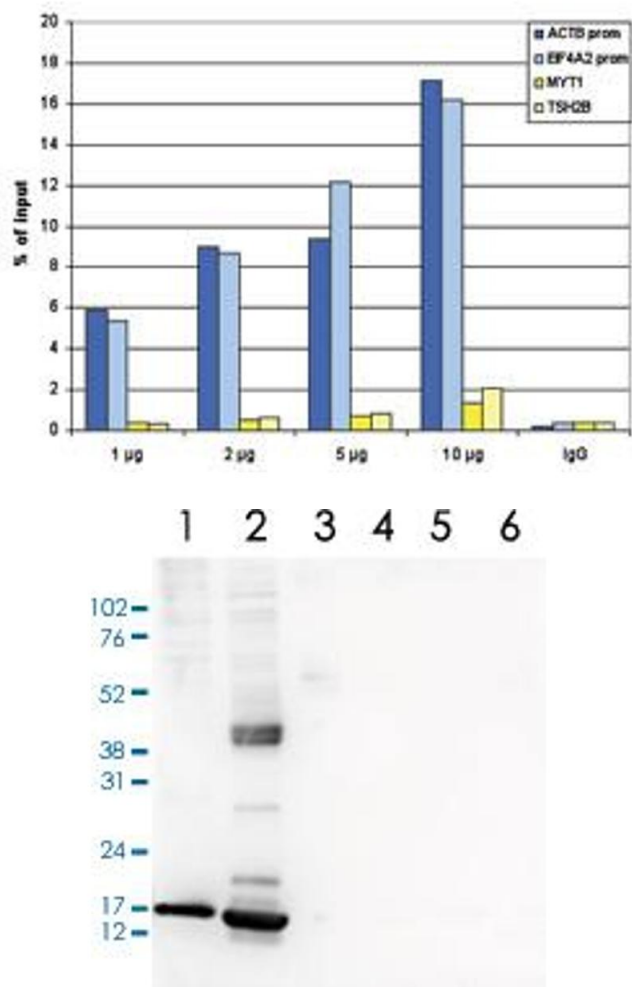


Image 2. ChIP assays were performed using human HeLa cells. A titration consisting of 1, 2, 5 and 10 µg of antibody per ChIP experiment was analyzed. IgG (2 µg/IP) was used as a negative IP control. Quantitative PCR was performed with primers for the promoters of the active EIF4A2 and ACTB genes, used as positive controls, and for the inactive TSH2B and MYT1 genes, used as negative controls.

Western Blotting

Image 3. Western Blot analysis of (1) 25 µg whole cell extracts of HeLa cells, (2) 15 µg histone extracts of HeLa cells, (3) 1 µg of recombinant histone H2A, (4) 1 µg of recombinant histone H2B, (5) 1 µg of recombinant histone H3, (6) 1 µg of recombinant histone H4.

Please check the [product details page](#) for more images. Overall 7 images are available for ABIN5773852.