

Datasheet for ABIN5773869
anti-HIST1H4A antibody (acLys5)

6 Images

[Go to Product page](#)

Overview

Quantity:	50 µg
Target:	HIST1H4A
Binding Specificity:	acLys5
Reactivity:	Human, Mouse
Host:	Rabbit
Clonality:	Polyclonal
Conjugate:	This HIST1H4A antibody is un-conjugated
Application:	ELISA, Western Blotting (WB), Immunofluorescence (IF), Chromatin Immunoprecipitation (ChIP), Dot Blot (DB), ChIP DNA-Sequencing (ChIP-seq)

Product Details

Purpose:	Rabbit polyclonal antibody raised against synthetic peptide of Histone H4 (K5ac).
Immunogen:	A synthetic peptide (conjugated with KLH) corresponding to Histone H4, acetylated at lysine 5.
Cross-Reactivity:	Human, Mouse

Target Details

Target:	HIST1H4A
Alternative Name:	HIST1H4A (HIST1H4A Products)
Background:	Full Gene Name: histone cluster 1, H4a Synonyms: H4/a,H4FA

Target Details

Gene ID: 8359

Application Details

Application Notes: ELISA (1:100-500)
Western Blot (1:500)
ChIP (1-2 µg/IP)
Dot Blot (1:5000)
Immunofluorescence (1:500)
The optimal working dilution should be determined by the end user.

Restrictions: For Research Use only

Handling

Format: Liquid

Buffer: In PBS (0.05 % sodium azide, 0.05 % proclin 300).

Preservative: ProClin, Sodium azide

Precaution of Use: This product contains ProClin and Sodium azide: POISONOUS AND HAZARDOUS SUBSTANCES which should be handled by trained staff only.

Storage: -20 °C,-80 °C

Storage Comment: Store at -20°C. For long term storage store at -80°C.
Aliquot to avoid repeated freezing and thawing.

Images

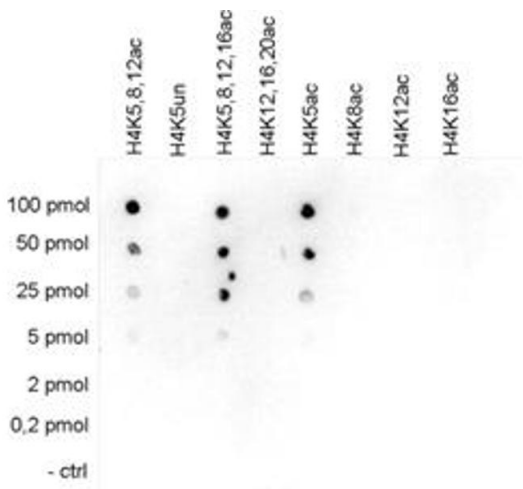
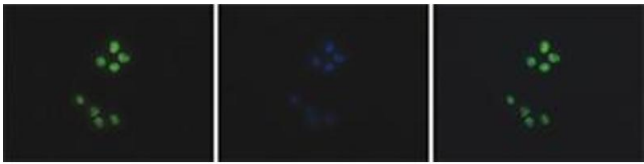


Image 1. Cross reactivity test using the Histone H4 (K5ac) antibody. Dot Blot analysis was performed with peptides containing other histone modifications and the unmodified H4. One hundred to 0.2 pmol of the respective peptides were spotted on a membrane. The antibody was used at a dilution of 1:5000. The figure shows a high specificity of the antibody for the modification of interest.



Immunofluorescence

Image 2. Immunofluorescent staining of HeLa cell line with antibody followed by an anti-rabbit antibody conjugated to Alexa488 (left). The middle panel shows staining of the nuclei with DAPI. A merge of the two stainings (right).

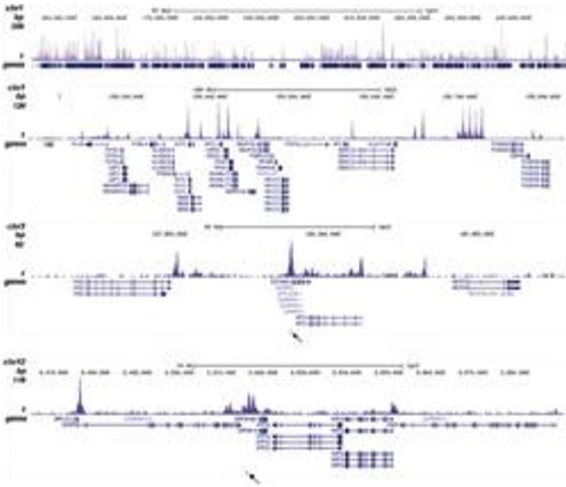


Image 3. ChIP was performed on sheared chromatin from 1 million HeLa cells. The figure shows the signal distribution along the complete length of chromosome 1 and a zoomin to a 500 kb region and the enrichment in two genomic regions on chromosome 3 and 12, respectively, containing EIF4A2 and GAPDH positive controls. The position of the amplicon used for validating the QPCR results is shown with an arrow.

Please check the [product details page](#) for more images. Overall 6 images are available for ABIN5773869.