



[Go to Product page](#)

Datasheet for ABIN5773870

## anti-HIST1H4A antibody (acLys5, acLys8, acLys12, acLys16)

### 5 Images

#### Overview

Quantity:	50 µg
Target:	HIST1H4A
Binding Specificity:	acLys5, acLys8, acLys12, acLys16
Reactivity:	Human, Mouse
Host:	Rabbit
Clonality:	Polyclonal
Conjugate:	This HIST1H4A antibody is un-conjugated
Application:	ELISA, Immunofluorescence (IF), Chromatin Immunoprecipitation (ChIP), Dot Blot (DB), ChIP DNA-Sequencing (ChIP-seq)

#### Product Details

Purpose:	Rabbit polyclonal antibody raised against synthetic peptide of Histone H4 (K5,8,12,16ac).
Immunogen:	A synthetic peptide (conjugated with KLH) corresponding to Histone H4, acetylated at lysines 5, 8, 12 and 16.
Cross-Reactivity:	Human, Mouse

#### Target Details

Target:	HIST1H4A
Alternative Name:	HIST1H4A ( <a href="#">HIST1H4A Products</a> )
Background:	Full Gene Name: histone cluster 1, H4a Synonyms: H4/a,H4FA

## Target Details

Gene ID: 8359

## Application Details

Application Notes: ELISA (1:1000)  
ChIP (2 µg/IP)  
Dot Blot (1:20000)  
Immunofluorescence (1:500)  
The optimal working dilution should be determined by the end user.

Restrictions: For Research Use only

## Handling

Format: Liquid

Buffer: In PBS (0.05 % sodium azide, 0.05 % proclin 300).

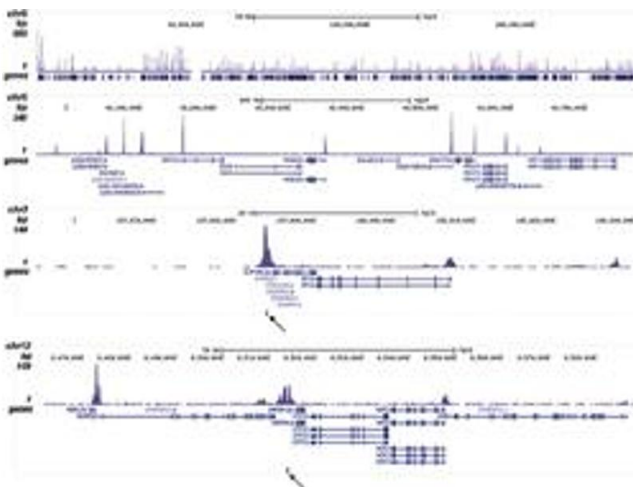
Preservative: ProClin, Sodium azide

Precaution of Use: This product contains ProClin and Sodium azide: POISONOUS AND HAZARDOUS SUBSTANCES which should be handled by trained staff only.

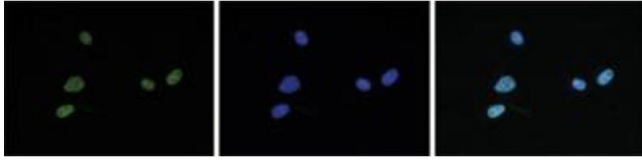
Storage: -20 °C, -80 °C

Storage Comment: Store at -20°C. For long term storage store at -80°C.  
Aliquot to avoid repeated freezing and thawing.

## Images

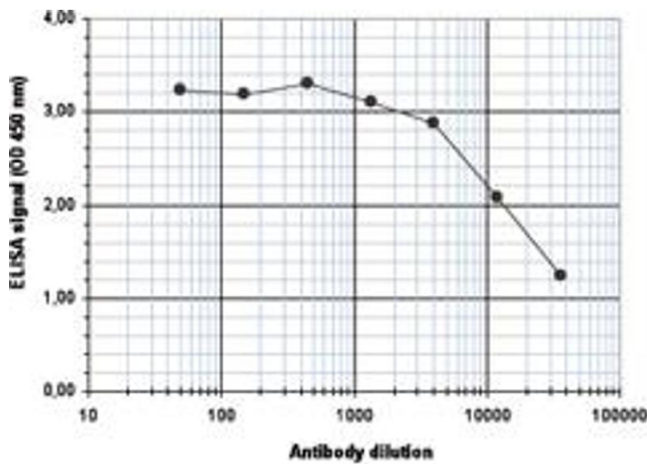


**Image 1.** ChIP was performed on sheared chromatin from 1 million HeLa cells. The figure shows the signal distribution along the complete length of chromosome 5 and a zoomin to a 600 kb region and the enrichment in two genomic regions on chromosome 3 and 12, respectively, containing EIF4A2 and GAPDH positive controls. The position of the amplicon used for validating the QPCR results is shown with an arrow.



### Immunofluorescence

**Image 2.** Immunofluorescent staining of mouse NIH3T3 cell line with antibody followed by an anti-rabbit antibody conjugated to Alexa488 (left). The middle panel shows staining of the nuclei with DAPI. A merge of the two stainings (right).



### ELISA

**Image 3.** ELISA is a quantitative method used to determine the titer of the antibody using a serial dilution of antibody against Histone H4 (K5,8,12,16ac) in antigen coated wells. The antigen used was a peptide containing the histone modification of interest. By plotting the absorbance against the antibody dilution, the titer of the antibody was estimated to be 1:21200.

Please check the [product details page](#) for more images. Overall 5 images are available for ABIN5773870.