



[Go to Product page](#)

Datasheet for ABIN5773877

anti-H2AFZ antibody (acLys4, acLys7, acLys11)

7 Images

Overview

Quantity:	50 µg
Target:	H2AFZ
Binding Specificity:	acLys4, acLys7, acLys11
Reactivity:	Human, Mouse
Host:	Rabbit
Clonality:	Polyclonal
Conjugate:	This H2AFZ antibody is un-conjugated
Application:	Western Blotting (WB), ELISA, Immunofluorescence (IF), Chromatin Immunoprecipitation (ChIP), ChIP DNA-Sequencing (ChIP-seq), Dot Blot (DB)

Product Details

Purpose:	Rabbit polyclonal antibody raised against synthetic peptide of Histone H2AZ.
Immunogen:	A synthetic peptide (conjugated with KLH) corresponding to Histone HAZ, acetylated at lysines 4, 7 and 11.
Cross-Reactivity:	Human, Mouse

Target Details

Target:	H2AFZ
Alternative Name:	H2AFZ (H2AFZ Products)
Background:	Full Gene Name: H2A histone family, member Z Synonyms: H2A.z,H2A/z,H2AZ,MGC117173

Target Details

Gene ID: 3015

Pathways: [Telomere Maintenance](#)

Application Details

Application Notes: ELISA (1:500)
Western Blot (1:1000)
ChIP (1 µL/IP)
Dot Blot (1:20000)
Immunofluorescence (1:500)
The optimal working dilution should be determined by the end user.

Restrictions: For Research Use only

Handling

Format: Liquid

Buffer: In PBS (0.05 % sodium azide, 0.05 % proclin 300).

Preservative: ProClin, Sodium azide

Precaution of Use: This product contains ProClin and Sodium azide: POISONOUS AND HAZARDOUS SUBSTANCES which should be handled by trained staff only.

Storage: -20 °C,-80 °C

Storage Comment: Store at -20°C. For long term storage store at -80°C.
Aliquot to avoid repeated freezing and thawing.

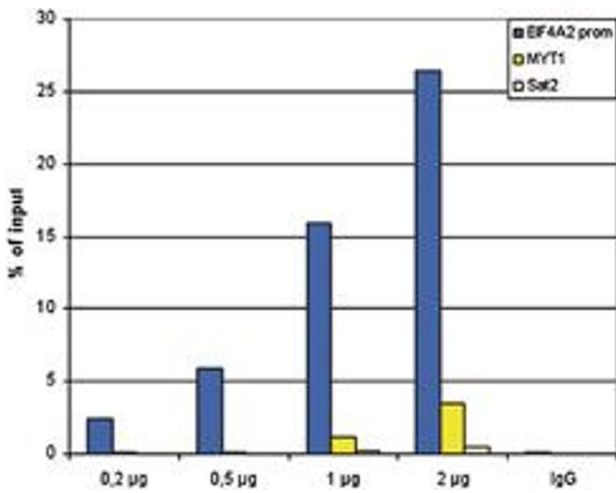
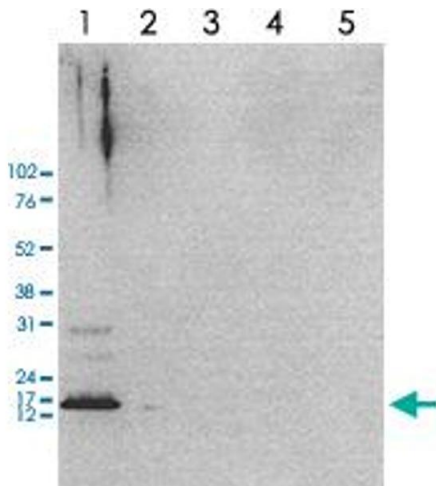


Image 1. ChIP assays were performed using human K562 cells. A titration of the antibody consisting of 0.2, 0.5, 1 and 2 µg per ChIP experiment was analysed. IgG (1 µg/IP) was used as negative IP control. Quantitative PCR was performed with primers specific for the promoter of the active genes CCT5 and EIF4A2, used as positive controls, and for the coding region of the inactive MYT1 gene and the Sat2 satellite repeat, used as negative controls. The figure shows the recovery, expressed as a % of input (the relative amount of immunoprecipitated DNA compared to input DNA after qPCR analysis).



Western Blotting

Image 2. Western Blot analysis of (1) 25 µg whole cell extracts of HeLa cells, (2) 1 µg of recombinant histone H2A, (3) 1 µg of recombinant histone H2B, (4) 1 µg of recombinant histone H3, (5) 1 µg of recombinant histone H4.



Immunofluorescence

Image 3. Immunofluorescent staining of HeLa cell line with antibody followed by an anti-rabbit antibody conjugated to Alexa488 (left). The middle panel shows staining of the nuclei with DAPI. A merge of the two stainings (right).

Please check the [product details page](#) for more images. Overall 7 images are available for ABIN5773877.