



[Go to Product page](#)

Datasheet for ABIN5773887

## anti-HIST3H2A antibody (C-Term)

### 4 Images

#### Overview

Quantity:	50 µg
Target:	HIST3H2A
Binding Specificity:	C-Term
Reactivity:	Human
Host:	Rabbit
Clonality:	Polyclonal
Conjugate:	This HIST3H2A antibody is un-conjugated
Application:	Western Blotting (WB), ELISA, Immunofluorescence (IF), Chromatin Immunoprecipitation (ChIP)

#### Product Details

Purpose:	Rabbit polyclonal antibody raised against synthetic peptide of Histone H2A (pan).
Immunogen:	A synthetic peptide (conjugated with KLH) corresponding to unmodified sequence at C-terminus of Histone H2A.
Cross-Reactivity:	Human

#### Target Details

Target:	HIST3H2A
Alternative Name:	HIST3H2A ( <a href="#">HIST3H2A Products</a> )
Background:	Full Gene Name: histone cluster 3, H2a Synonyms: MGC3165

## Target Details

---

Gene ID: 92815

## Application Details

---

Application Notes: ELISA (1:100-1000)  
Western Blot (1:2000)  
ChIP (1-2 µg/CHIP)  
Immunofluorescence (1:500)  
The optimal working dilution should be determined by the end user.

Restrictions: For Research Use only

## Handling

---

Format: Liquid

Buffer: In PBS (0.05 % sodium azide, 0.05 % proclin 300).

Preservative: ProClin, Sodium azide

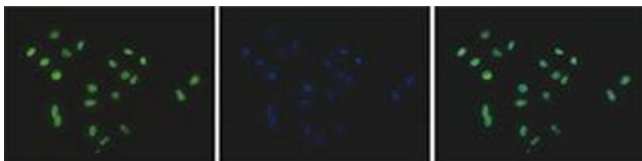
Precaution of Use: This product contains ProClin and Sodium azide: POISONOUS AND HAZARDOUS SUBSTANCES which should be handled by trained staff only.

Storage: -20 °C, -80 °C

Storage Comment: Store at -20°C. For long term storage store at -80°C.  
Aliquot to avoid repeated freezing and thawing.

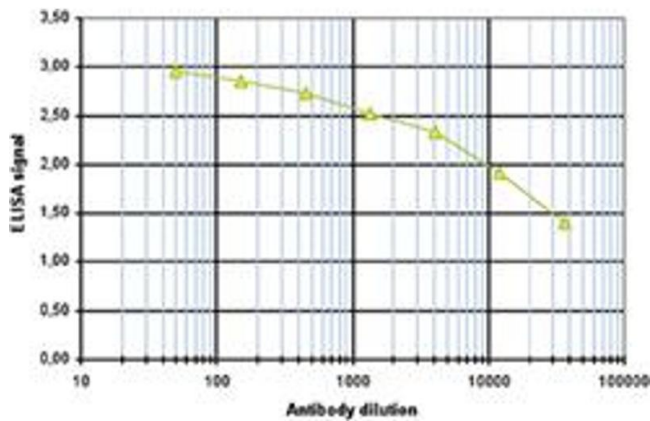
## Images

---



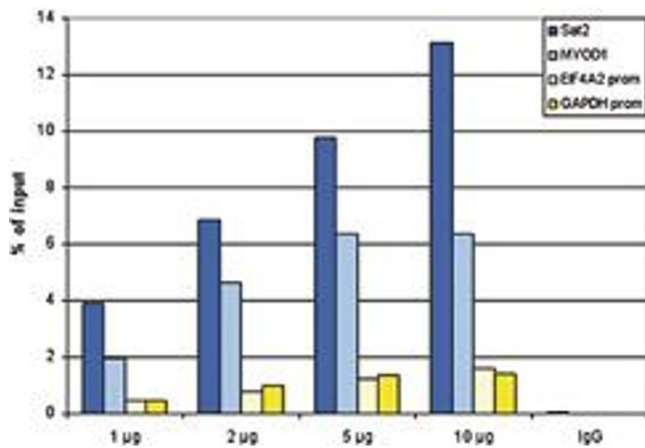
### Immunofluorescence

**Image 1.** Immunofluorescent staining of HeLa cell line with antibody followed by an anti-rabbit antibody conjugated to Alexa488 (left). The middle panel shows staining of the nuclei with DAPI. A merge of the two stainings (right).



**ELISA**

**Image 2.** ELISA is a quantitative method used to determine the titer of the antibody using a serial dilution of antibody against Histone H2A (pan) in antigen coated wells. By plotting the absorbance against the antibody dilution, the titer of the antibody was estimated to be 1:32500.



**Image 3.** ChIP assays were performed using human HeLa cells. A titration of the antibody consisting of 1, 2, 5, and 10 µg per ChIP experiment was analysed. IgG (5 µg/IP) was used as negative IP control. QPCR was performed with primers for the GAPDH and EIF4A2 promoters, used as negative controls and for the inactive MYOD1 gene and the Sat2 satellite repeat, used as positive controls. The figure shows the recovery, expressed as a % of input (the relative amount of immunoprecipitated DNA compared to input DNA after qPCR analysis).

Please check the [product details page](#) for more images. Overall 4 images are available for ABIN5773887.