

Datasheet for ABIN5773897

anti-WDR61 antibody**2** Images[Go to Product page](#)

Overview

Quantity:	150 µg
Target:	WDR61
Reactivity:	Human
Host:	Rabbit
Clonality:	Polyclonal
Conjugate:	This WDR61 antibody is un-conjugated
Application:	Western Blotting (WB), Chromatin Immunoprecipitation (ChIP)

Product Details

Purpose:	Rabbit polyclonal antibody raised against recombinant SKI8.
Immunogen:	Recombinant protein corresponding to human SKI8.
Cross-Reactivity:	Drosophila melanogaster, Human

Target Details

Target:	WDR61
Alternative Name:	SKI8 (WDR61 Products)

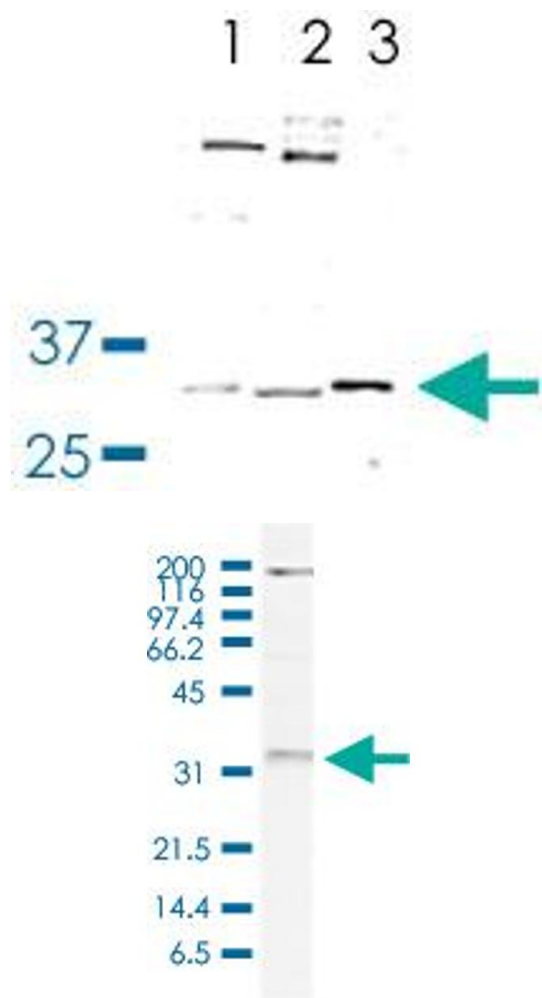
Application Details

Application Notes:	Western Blot (1:1000) ChIP (1-5 µg/CHIP) The optimal working dilution should be determined by the end user.
--------------------	---

Application Details

Restrictions:	For Research Use only
Handling	
Format:	Liquid
Buffer:	In PBS (0.05 % sodium azide, 0.05 % proclin 300).
Preservative:	ProClin, Sodium azide
Precaution of Use:	This product contains ProClin and Sodium azide: POISONOUS AND HAZARDOUS SUBSTANCES which should be handled by trained staff only.
Storage:	-20 °C,-80 °C
Storage Comment:	Store at -20°C. For long term storage store at -80°C. Aliquot to avoid repeated freezing and thawing.

Images



Western Blotting

Image 1. Western Blot analysis of (1) nuclear extract of HeLa cells, (2) Drosophila adult whole cell extracts, and (3) purified human PAF complex.

Western Blotting

Image 2. Western Blot (Cell lysate) analysis of 20 ug nuclear extracts of HeLa cells.