

Datasheet for ABIN5773917  
**anti-AGO1 antibody (C-Term)**[Go to Product page](#)

## 2 Images

## Overview

Quantity:	100 µL
Target:	AGO1 (EIF2C1)
Binding Specificity:	C-Term
Reactivity:	Human
Host:	Rabbit
Clonality:	Polyclonal
Conjugate:	This AGO1 antibody is un-conjugated
Application:	Western Blotting (WB), ELISA

## Product Details

Purpose:	Rabbit polyclonal antibody raised against synthetic peptide of EIF2C1.
Immunogen:	A synthetic peptide (conjugated with KLH) corresponding to C-terminus of EIF2C1 and EIF2C2.
Cross-Reactivity:	Human

## Target Details

Target:	AGO1 (EIF2C1)
Alternative Name:	EIF2C1 ( <a href="#">EIF2C1 Products</a> )
Background:	Full Gene Name: eukaryotic translation initiation factor 2C, 1 Synonyms: AGO1, DKFZp686M13167, EIF2C, GERP95, Q99
Gene ID:	26523

Target Details

Pathways: [Fc-epsilon Receptor Signaling Pathway](#), [Regulatory RNA Pathways](#), [EGFR Signaling Pathway](#), [Neurotrophin Signaling Pathway](#), [Hormone Transport](#), [Regulation of Actin Filament Polymerization](#), [Stem Cell Maintenance](#), [Ribonucleoprotein Complex Subunit Organization](#)

Application Details

Application Notes: ELISA (1:100)  
Western Blot (1:1000)  
The optimal working dilution should be determined by the end user.

Restrictions: For Research Use only

Handling

Format: Liquid

Buffer: In 10 mM HEPES, 2 mM EDTA, pH 7.5 (0.05 % sodium azide).

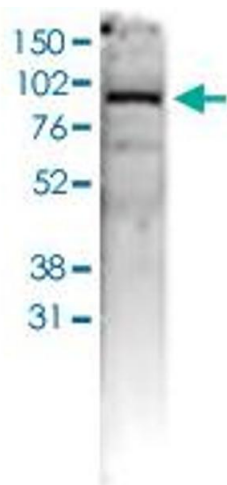
Preservative: Sodium azide

Precaution of Use: This product contains Sodium azide: a POISONOUS AND HAZARDOUS SUBSTANCE which should be handled by trained staff only.

Storage: -20 °C

Storage Comment: Store at -20°C.  
Aliquot to avoid repeated freezing and thawing.

Images



**Western Blotting**

**Image 1.** Western Blot (Cell lysate) analysis of 40 ug whole cell extracts of U2OS cells.

ELISA

**Image 2.** ELISA is a quantitative method used to determine the titer of the antibody using a serial dilution of antibody against human EIF2C1. The plates were coated with the peptide used for immunization of the rabbit. By plotting the absorbance against the antibody dilution, the titer of the antibody was estimated to be 1:3500.

