



[Go to Product page](#)

Datasheet for ABIN5773973  
**anti-Nephrin antibody (AA 53-101)**

1 Image

### Overview

Quantity:	50 µL
Target:	Nephrin (NPHS1)
Binding Specificity:	AA 53-101
Reactivity:	Human
Host:	Rabbit
Clonality:	Monoclonal
Conjugate:	This Nephrin antibody is un-conjugated
Application:	Western Blotting (WB), ELISA, Immunoprecipitation (IP)

### Product Details

Purpose:	Rabbit monoclonal antibody raised against synthetic peptide of human NPHS1.
Immunogen:	A synthetic peptide corresponding to amino acids 53-101 at C-terminus of the first Ig-like domain of human NPHS1.
Clone:	G17-H
Isotype:	IgG
Cross-Reactivity:	Human

### Target Details

Target:	Nephrin (NPHS1)
Alternative Name:	NPHS1 ( <a href="#">NPHS1 Products</a> )

## Target Details

---

Background:	Full Gene Name: nephrosis 1, congenital, Finnish type (nephrin) Synonyms: CNF,NPHN
Gene ID:	4868
Pathways:	<a href="#">Regulation of Actin Filament Polymerization, Skeletal Muscle Fiber Development</a>

## Application Details

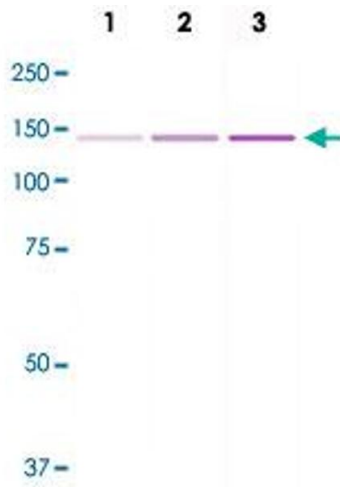
---

Application Notes:	ELISA (1:20000-1:50000) Immunoprecipitation Western Blot (1:2000) The optimal working dilution should be determined by the end user.
Restrictions:	For Research Use only

## Handling

---

Format:	Liquid
Buffer:	In 20 mM Tris-HCl buffer, pH 8.0 (10 mg/mL BSA, 0.05 % Sodium Azide).
Preservative:	Sodium azide
Precaution of Use:	This product contains Sodium azide: a POISONOUS AND HAZARDOUS SUBSTANCE which should be handled by trained staff only.
Storage:	-20 °C
Storage Comment:	Store at -20°C. Aliquot to avoid repeated freezing and thawing.



### Western Blotting

**Image 1.** Western Blot analysis of NPHS1 recombinant protein (Lane 1: 50 ng, Lane 2: 100 ng and Lane 3: 200 ng) with NPHS1 monoclonal antibody, clone G17-H .