



[Go to Product page](#)

Datasheet for ABIN5773980
anti-PRSS1 antibody (AA 92-106)

1 Image

Overview

Quantity:	100 µL
Target:	PRSS1
Binding Specificity:	AA 92-106
Reactivity:	Human
Host:	Rabbit
Clonality:	Monoclonal
Conjugate:	This PRSS1 antibody is un-conjugated
Application:	Western Blotting (WB), ELISA

Product Details

Purpose:	Rabbit monoclonal antibody raised against synthetic peptide of human PRSS1.
Immunogen:	A synthetic peptide corresponding to amino acids 92-106 at N-terminus of human PRSS1.
Clone:	A16-N
Isotype:	IgG
Cross-Reactivity:	Human

Target Details

Target:	PRSS1
Alternative Name:	PRSS1 (PRSS1 Products)
Background:	Full Gene Name: protease, serine, 1 (trypsin 1)

Target Details

Synonyms: MGC120175,MGC149362,TRP1,TRY1,TRY4,TRYP1

Gene ID: 5644

Application Details

Application Notes: ELISA (1:20000-1:50000)
Western Blot (1:4000)
The optimal working dilution should be determined by the end user.

Restrictions: For Research Use only

Handling

Format: Liquid

Buffer: In 20 mM Tris-HCl buffer, pH 8.0 (10 mg/mL BSA, 0.05 % Sodium Azide).

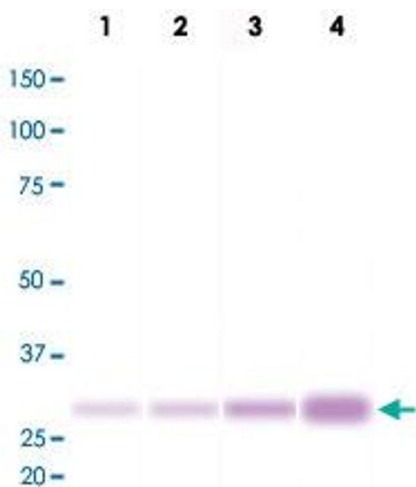
Preservative: Sodium azide

Precaution of Use: This product contains Sodium azide: a POISONOUS AND HAZARDOUS SUBSTANCE which should be handled by trained staff only.

Storage: -20 °C

Storage Comment: Store at -20°C.
Aliquot to avoid repeated freezing and thawing.

Images



Western Blotting

Image 1. Western Blot analysis of human pancreas (Lane 1: 20 ng, Lane 2: 40 ng, Lane 3: 100 ng and Lane 4: 200 ng) with PRSS1 monoclonal antibody, clone A16-N .