



[Go to Product page](#)

Datasheet for ABIN5774124
anti-HIST1H4A antibody (3meLys20)

3 Images

Overview

Quantity:	100 µL
Target:	HIST1H4A
Binding Specificity:	3meLys20
Reactivity:	Human, Zebrafish (Danio rerio)
Host:	Mouse
Clonality:	Monoclonal
Conjugate:	This HIST1H4A antibody is un-conjugated
Application:	Western Blotting (WB), Immunofluorescence (IF), Chromatin Immunoprecipitation (ChIP)

Product Details

Purpose:	Mouse monoclonal antibody raised against synthetic peptide of Histone H4 (K20me3).
Immunogen:	A synthetic peptide (conjugated with KLH) corresponding to Histone H4, trimethylated at lysine 20.
Isotype:	IgG1
Cross-Reactivity:	Human, Zebrafish (Danio rerio)

Target Details

Target:	HIST1H4A
Alternative Name:	HIST1H4A (HIST1H4A Products)
Background:	Full Gene Name: histone cluster 1, H4a

Target Details

Synonyms: H4/a,H4FA

Gene ID: 8359

Application Details

Application Notes: Western Blot (1:50)
ChIP (3 μ L/CHIP)
Immunofluorescence (1:200)
The optimal working dilution should be determined by the end user.

Restrictions: For Research Use only

Handling

Format: Liquid

Buffer: In mouse hybridoma cell culture concentrated supernatant (0.05 % sodium azide).

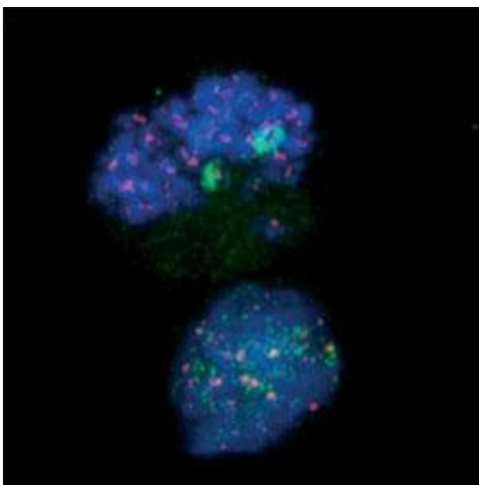
Preservative: Sodium azide

Precaution of Use: This product contains Sodium azide: a POISONOUS AND HAZARDOUS SUBSTANCE which should be handled by trained staff only.

Storage: -20 °C,-80 °C

Storage Comment: Store at -20°C. For long term storage store at -80°C.
Aliquot to avoid repeated freezing and thawing.

Images



Immunofluorescence

Image 1. Immunofluorescent staining of HEK293T cell line with antibody were labeled with goat-anti-mouse antibody conjugated to Alexa488 and goat-anti-human antibody conjugated to Alexa633. Cells were mounted with Vectashield containing DAPI.

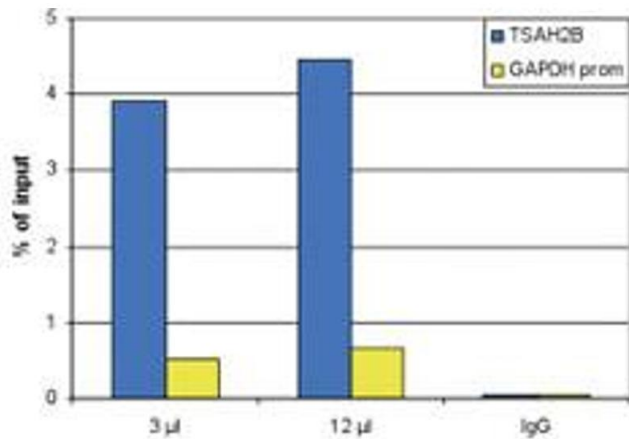
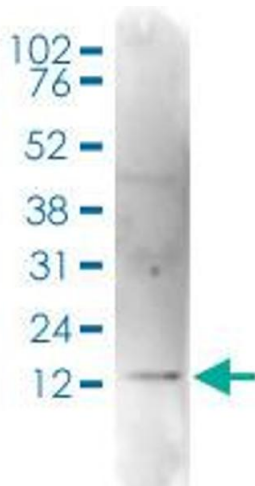


Image 2. ChIP assays were performed using human HeLa cells. 3 and 12 µl of antibody and 1 µg IgG (negative IP control) were analysed. QPCR was performed with primers for the GAPDH promoter and for the inactive gene TSH2B. The figure shows the recovery, expressed as a % of input (the relative amount of immunoprecipitated DNA compared to input DNA after qPCR analysis).



Western Blotting

Image 3. Western Blot (Cell lysate) analysis of 15 µg histone extracts of HeLa cells.