



[Go to Product page](#)

Datasheet for ABIN5774166
anti-TSPY3 antibody (AA 274-303)

2 Images

Overview

Quantity:	400 µL
Target:	TSPY3
Binding Specificity:	AA 274-303
Reactivity:	Human
Host:	Rabbit
Clonality:	Polyclonal
Conjugate:	This TSPY3 antibody is un-conjugated
Application:	Western Blotting (WB), Immunohistochemistry (Paraffin-embedded Sections) (IHC (p))

Product Details

Purpose:	Rabbit polyclonal antibody raised against synthetic peptide of LOC728137
Immunogen:	A synthetic peptide (conjugated with KLH) corresponding to amino acids 274-303 at C-terminal region at human LOC728137.
Cross-Reactivity:	Human

Target Details

Target:	TSPY3
Alternative Name:	LOC728137 (TSPY3 Products)
Background:	Full Gene Name: similar to testis specific protein, Y-linked 1
Gene ID:	728137

Application Details

Application Notes: Immunohistochemistry (1:10-50)
Western Blot (1:1000)
The optimal working dilution should be determined by the end user.

Restrictions: For Research Use only

Handling

Format: Liquid

Buffer: In PBS (0.09 % sodium azide)

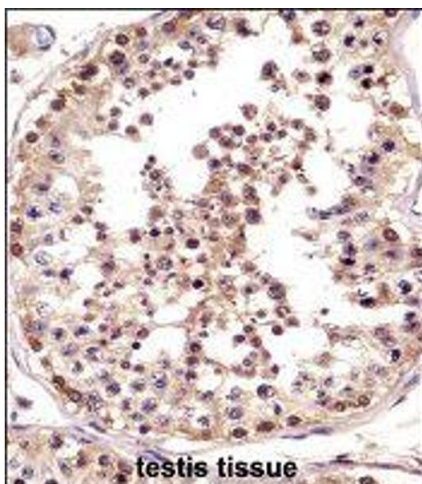
Preservative: Sodium azide

Precaution of Use: This product contains Sodium azide: a POISONOUS AND HAZARDOUS SUBSTANCE which should be handled by trained staff only.

Storage: 4 °C,-20 °C

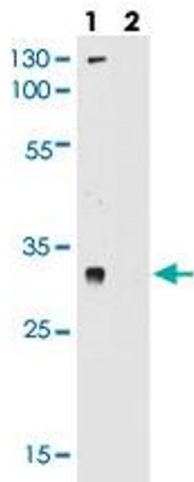
Storage Comment: Store at 4°C. For long term storage store at -20°C.
Aliquot to avoid repeated freezing and thawing.

Images



Immunohistochemistry

Image 1. Immunohistochemistry (Formalin/PFA-fixed paraffin-embedded sections) of human testis tissue with LOC728137 polyclonal antibody followed by peroxidase conjugation of the secondary antibody and DAB staining.



Western Blotting

Image 2. Western blot analysis of LOC728137 polyclonal antibody pre-incubated without (lane 1) and with (lane 2) blocking peptide in LNCAP cell line lysate. LOC728137 (arrow) was detected using the purified polyclonal antibody.