



[Go to Product page](#)

Datasheet for ABIN5774320

anti-Phosphotyrosine antibody

3 Images

Overview

Quantity:	100 µg
Target:	Phosphotyrosine
Reactivity:	Please inquire
Host:	Rabbit
Clonality:	Monoclonal
Conjugate:	This Phosphotyrosine antibody is un-conjugated
Application:	Western Blotting (WB), Immunoprecipitation (IP), Immunohistochemistry (IHC), Flow Cytometry (FACS), ELISA, Immunocytochemistry (ICC)

Product Details

Purpose:	Recombinant rabbit monoclonal antibody raised against phosphotyrosine.
Immunogen:	Original antibody is raised against phosphotyrosine conjugated with BSA.
Clone:	RM111
Isotype:	IgG
Specificity:	This antibody reacts to tyrosine-phosphorylated proteins. No cross reactivity with nonphosphorylated tyrosine, phosphoserine, and phosphothreonine
Cross-Reactivity (Details):	This antibody reacts to tyrosine-phosphorylated proteins. No cross reactivity with nonphosphorylated tyrosine, phosphoserine, and phosphothreonine

Target Details

Target:	Phosphotyrosine
---------	-----------------

Target Details

Abstract: [Phosphotyrosine Products](#)

Target Type: Amino Acid

Application Details

Application Notes: ELISA
Flow Cytometry
Immunocytochemistry (1:200-1:500)
Immunohistochemistry (1:200-1:500)
Immunoprecipitation (1:200-1:1000)
Western Blot (1:1000-1:5000)
The optimal working dilution should be determined by the end user.

Restrictions: For Research Use only

Handling

Format: Liquid

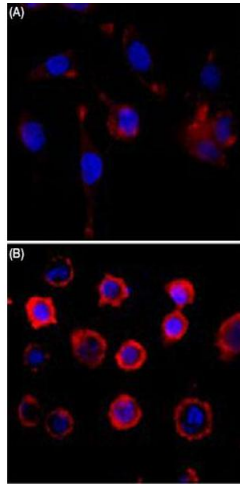
Buffer: In PBS (50 % glycerol, 1 % BSA, 0.09 % sodium azide)

Preservative: Sodium azide

Precaution of Use: This product contains Sodium azide: a POISONOUS AND HAZARDOUS SUBSTANCE which should be handled by trained staff only.

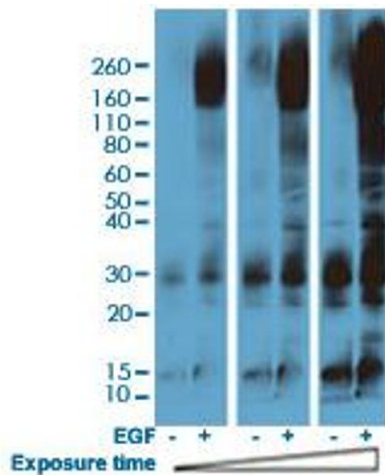
Storage: -20 °C

Storage Comment: Store at -20°C.
Aliquot to avoid repeated freezing and thawing.



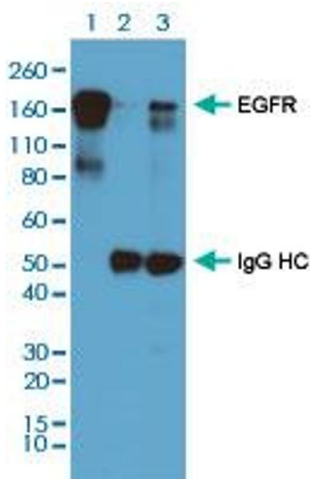
Immunocytochemistry

Image 1. Immunocytochemistry staining of serum-starved A431 cells (A) and serum-starved A431 cells treated with EGF (B) using Phosphotyrosine monoclonal antibody, clone RM111 (Red) at 1:500 dilution. Nuclear DNA was stained with DAPI (Blue).



Western Blotting

Image 2. Western blot analysis of serum-starved A431 cells nontreated or treated with 100 ng/mL EGF using Phosphotyrosine monoclonal antibody, clone RM111 at 1:5000 dilution.



Immunoprecipitation

Image 3. Immunoprecipitation analysis of Lane 1: EGE-treated A431 cell whole lysates, Lane 2: EGE-treated A431 cell whole lysates using rabbit IgG antibody; Lane 3: EGE-treated A431 cell whole lysates using Phosphotyrosine monoclonal antibody, clone RM111 at 1:1000 dilution.