



[Go to Product page](#)

Datasheet for ABIN5774333
anti-ASB6 antibody (AA 10-133)

2 Images

Overview

Quantity:	100 µL
Target:	ASB6
Binding Specificity:	AA 10-133
Reactivity:	Human
Host:	Rabbit
Clonality:	Polyclonal
Conjugate:	This ASB6 antibody is un-conjugated
Application:	Western Blotting (WB), Immunohistochemistry (Paraffin-embedded Sections) (IHC (p))

Product Details

Purpose:	Rabbit polyclonal antibody raised against partial recombinant human ASB6.
Immunogen:	Recombinant protein corresponding to amino acids 10-133 of human ASB6.
Sequence:	IIFEYQPLVD AILGSLGIQD PERQESLDRP SYVASEESRI LVLTELLERK AHSPFYQEGV SNALLKMAEL GLTRAADVLL RHGANLNFED PVTYYTALHI AVLRNQPDMV ELLVHHGADV NRRD
Isotype:	IgG
Cross-Reactivity:	Human

Target Details

Target:	ASB6
Alternative Name:	ASB6 (ASB6 Products)

Target Details

Background: Full Gene Name: ankyrin repeat and SOCS box-containing 6
Synonyms: FLJ20548,MGC1024

Gene ID: 140459

Application Details

Application Notes: Immunohistochemistry (Formalin/PFA-fixed paraffin-embedded sections) (1:50-1:200)
Western Blot (1:100-1:250)
The optimal working dilution should be determined by the end user.

Restrictions: For Research Use only

Handling

Format: Liquid

Buffer: In PBS, pH 7.2 (40 % glycerol, 0.02 % sodium azide).

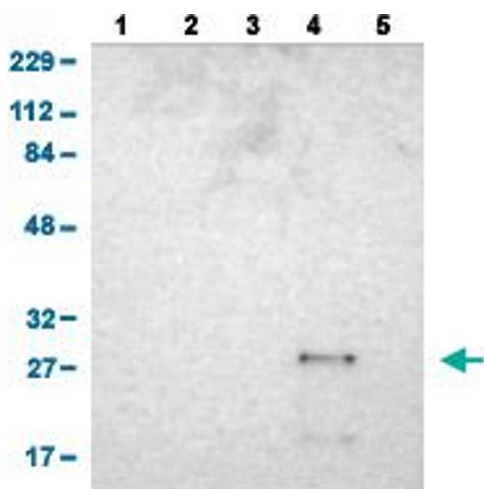
Preservative: Sodium azide

Precaution of Use: This product contains Sodium azide: a POISONOUS AND HAZARDOUS SUBSTANCE which should be handled by trained staff only.

Storage: 4 °C,-20 °C

Storage Comment: Store at 4°C for short term storage. For long term storage store at -20°C.
Aliquot to avoid repeated freezing and thawing.

Images



Western Blotting

Image 1. Western Blot analysis of (1) human cell line RT-4 (2) human cell line U-251MG sp (3) human plasma (IgG/HSA depleted) (4) human liver tissue, and (5) human tonsil tissue.



Immunohistochemistry

Image 2. Immunohistochemical staining (Formalin-fixed paraffin-embedded sections) of human stomach shows strong cytoplasmic and membranous positivity in glandular cells.