

Datasheet for ABIN5774361
anti-PPM1B antibody (AA 359-463)[Go to Product page](#)

3 Images

Overview

Quantity:	100 µL
Target:	PPM1B
Binding Specificity:	AA 359-463
Reactivity:	Human
Host:	Rabbit
Clonality:	Polyclonal
Conjugate:	This PPM1B antibody is un-conjugated
Application:	Western Blotting (WB), Immunofluorescence (IF), Immunohistochemistry (Paraffin-embedded Sections) (IHC (p))

Product Details

Purpose:	Rabbit polyclonal antibody raised against partial recombinant human PPM1B.
Immunogen:	Recombinant protein corresponding to amino acids 359-463 of human PPM1B.
Sequence:	KRNVIEAVYS RLNP HRES DG ASD EAEES GS QGKLVEALRQ MRINHRGNYR QLLEEMLT SY RLAKVEGEES PAEPAATATS SNSDAGNPVT MQESHTESES GLAEL
Isotype:	IgG
Cross-Reactivity:	Human

Target Details

Target:	PPM1B
---------	-------

Target Details

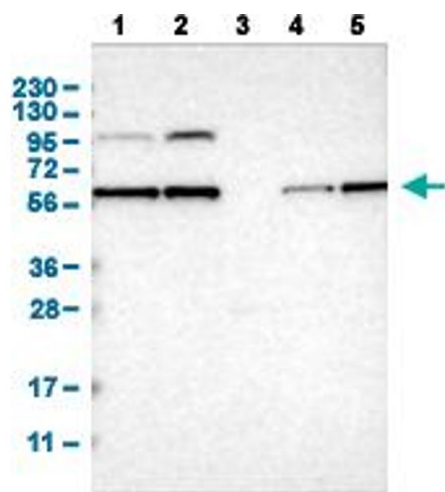
Alternative Name:	PPM1B (PPM1B Products)
Background:	Full Gene Name: protein phosphatase 1B (formerly 2C), magnesium-dependent, beta isoform Synonyms: MGC21657,PP2C-beta-X,PP2CB,PP2CBETA,PPC2BETAX
Gene ID:	5495

Application Details

Application Notes:	Immunofluorescence (1-4 µg/mL) Immunohistochemistry (Formalin/PFA-fixed paraffin-embedded sections) (1:20-1:50) Western Blot (1:100-1:250) The optimal working dilution should be determined by the end user.
Restrictions:	For Research Use only

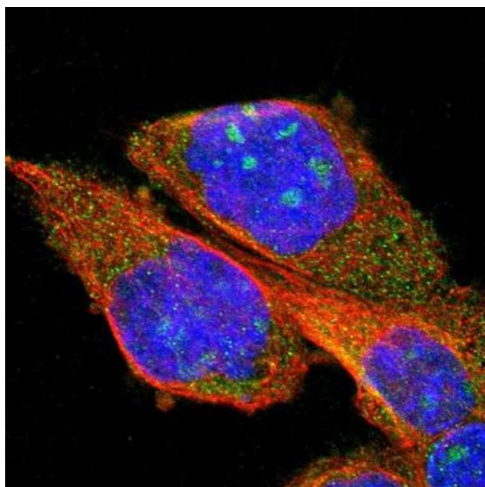
Handling

Format:	Liquid
Buffer:	In PBS, pH 7.2 (40 % glycerol, 0.02 % sodium azide).
Preservative:	Sodium azide
Precaution of Use:	This product contains Sodium azide: a POISONOUS AND HAZARDOUS SUBSTANCE which should be handled by trained staff only.
Storage:	4 °C,-20 °C
Storage Comment:	Store at 4°C for short term storage. For long term storage store at -20°C. Aliquot to avoid repeated freezing and thawing.



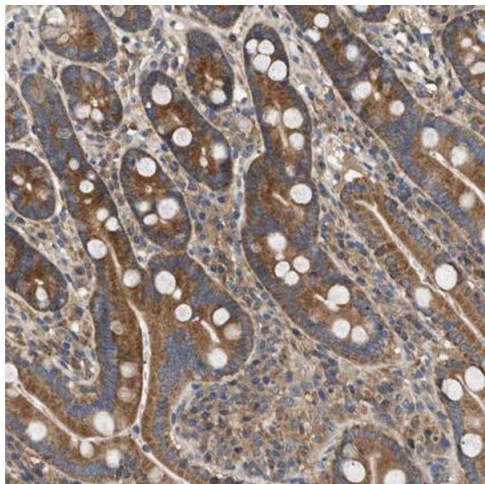
Western Blotting

Image 1. Western Blot analysis of (1) human cell line RT-4 (2) human cell line U-251MG sp (3) human plasma (IgG/HSA depleted) (4) human liver tissue, and (5) human tonsil tissue.



Immunofluorescence

Image 2. Immunofluorescent staining of human cell line A-431 shows positivity in nucleoli & cytoplasm. Antibody staining is shown in green.



Immunohistochemistry

Image 3. Immunohistochemical staining (Formalin-fixed paraffin-embedded sections) of human duodenum shows cytoplasmic positivity in glandular cells.