



[Go to Product page](#)

Datasheet for ABIN5774374
anti-ARL6 antibody (AA 92-184)

2 Images

Overview

Quantity:	100 µL
Target:	ARL6
Binding Specificity:	AA 92-184
Reactivity:	Human
Host:	Rabbit
Clonality:	Polyclonal
Conjugate:	This ARL6 antibody is un-conjugated
Application:	Western Blotting (WB), Immunohistochemistry (Paraffin-embedded Sections) (IHC (p))

Product Details

Purpose:	Rabbit polyclonal antibody raised against partial recombinant human ARL6.
Immunogen:	Recombinant protein corresponding to amino acids 92-184 of human ARL6.
Sequence:	FVIDSSDRLR MVVAKEELDT LLNHPDIKHR RIPILFFANK MDLRDAVTSV KVSQLLCLEN IKDKPWHICA SDAIKGEGQLQ EGVDWLQDQI QTV
Isotype:	IgG
Cross-Reactivity:	Human

Target Details

Target:	ARL6
Alternative Name:	ARL6 (ARL6 Products)

Target Details

Background: Full Gene Name: ADP-ribosylation factor-like 6
Synonyms: BBS3,MGC32934

Gene ID: 84100

Application Details

Application Notes: Immunohistochemistry (Formalin/PFA-fixed paraffin-embedded sections) (1:50-1:200)
Western Blot (0.4 µg/mL)
The optimal working dilution should be determined by the end user.

Restrictions: For Research Use only

Handling

Format: Liquid

Buffer: In PBS, pH 7.2 (40 % glycerol, 0.02 % sodium azide).

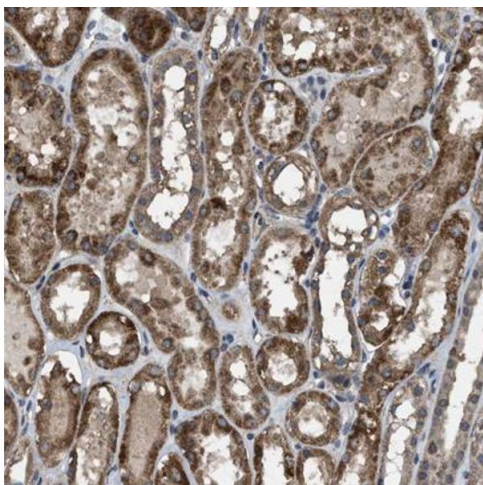
Preservative: Sodium azide

Precaution of Use: This product contains Sodium azide: a POISONOUS AND HAZARDOUS SUBSTANCE which should be handled by trained staff only.

Storage: 4 °C, -20 °C

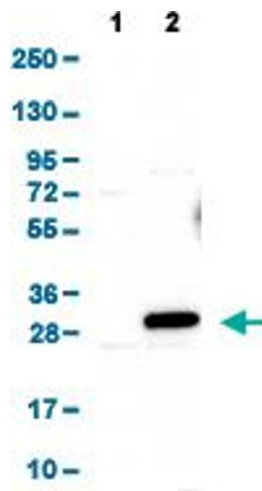
Storage Comment: Store at 4°C for short term storage. For long term storage store at -20°C.
Aliquot to avoid repeated freezing and thawing.

Images



Immunohistochemistry

Image 1. Immunohistochemical staining (Formalin-fixed paraffin-embedded sections) of human kidney shows strong cytoplasmic positivity in tubuli.



Western Blotting

Image 2. Western Blot analysis of (1) Negative control (vector only transfected HEK293T lysate), and (2) Over-expression lysate (Co-expressed with a C-terminal myc-DDK tag (~3.1 kDa) in mammalian HEK293T cells).