



[Go to Product page](#)

Datasheet for ABIN5774421

anti-BLACE antibody

1 Image

Overview

Quantity:	100 µL
Target:	BLACE
Reactivity:	Human
Host:	Rabbit
Clonality:	Polyclonal
Conjugate:	This BLACE antibody is un-conjugated
Application:	Immunohistochemistry (Paraffin-embedded Sections) (IHC (p))

Product Details

Purpose:	Rabbit polyclonal antibody raised against partial recombinant human BLACE.
Immunogen:	Recombinant protein corresponding to human BLACE.
Sequence:	HAWLYLTRHF PWSPFPHGGW TDTSEPCVLE TLGGSSLAAL WGNSLWVQSS GACAFCVYES LIEQSLPNER FEELLGPSP GEVM
Isotype:	IgG
Cross-Reactivity:	Human

Target Details

Target:	BLACE
Alternative Name:	BLACE (BLACE Products)
Background:	Full Gene Name: B-cell acute lymphoblastic leukemia expressed

Target Details

Gene ID: 338436

Application Details

Application Notes: Immunohistochemistry (Formalin/PFA-fixed paraffin-embedded sections) (1:200-1:500)
The optimal working dilution should be determined by the end user.

Restrictions: For Research Use only

Handling

Format: Liquid

Buffer: In PBS, pH 7.2 (40 % glycerol, 0.02 % sodium azide).

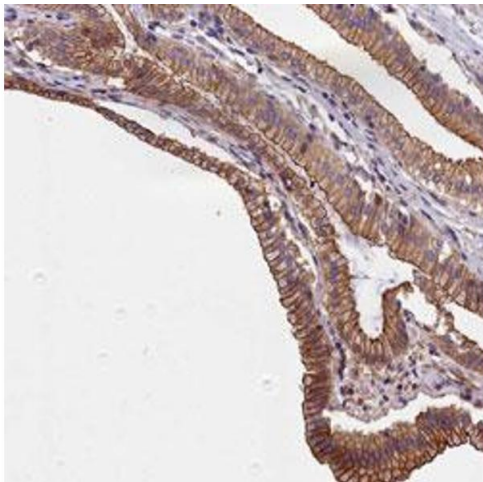
Preservative: Sodium azide

Precaution of Use: This product contains Sodium azide: a POISONOUS AND HAZARDOUS SUBSTANCE which should be handled by trained staff only.

Storage: 4 °C,-20 °C

Storage Comment: Store at 4°C for short term storage. For long term storage store at -20°C.
Aliquot to avoid repeated freezing and thawing.

Images



Immunohistochemistry

Image 1. Immunohistochemical staining (Formalin-fixed paraffin-embedded sections) of human gall bladder with BLACE polyclonal antibody shows distinct cytoplasmic and membranous positivity in glandular cells.