



Datasheet for ABIN5774457
anti-CNTLN antibody



[Go to Product page](#)

2 Images

Overview

Quantity:	100 µL
Target:	CNTLN
Reactivity:	Human
Host:	Rabbit
Clonality:	Polyclonal
Conjugate:	This CNTLN antibody is un-conjugated
Application:	Western Blotting (WB), Immunohistochemistry (Paraffin-embedded Sections) (IHC (p))

Product Details

Purpose:	Rabbit polyclonal antibody raised against partial recombinant human CNTLN
Immunogen:	Recombinant protein corresponding to human CNTLN.
Sequence:	LIEARKEVEV SQSKYNALSL QLSNKQTELI QKDMDITLVR KELQELQONLY KQNSTHTAQQ AELIQQQLQVL NMDTQKVLRN QEDVHTAESI S
Isotype:	IgG
Cross-Reactivity:	Human

Target Details

Target:	CNTLN
Alternative Name:	CNTLN (CNTLN Products)
Background:	Full Gene Name: centlein, centrosomal protein

Target Details

Synonyms: C9orf101,C9orf39,FLJ20276,FLJ25636,RP11-340N12.1,bA340N12.1

Gene ID: 54875

Application Details

Application Notes: Immunohistochemistry (Formalin/PFA-fixed paraffin-embedded sections) (1:50-1:200)
Western Blot (1:100-1:250)
The optimal working dilution should be determined by the end user.

Restrictions: For Research Use only

Handling

Format: Liquid

Buffer: In PBS, pH 7.2 (40 % glycerol, 0.02 % sodium azide).

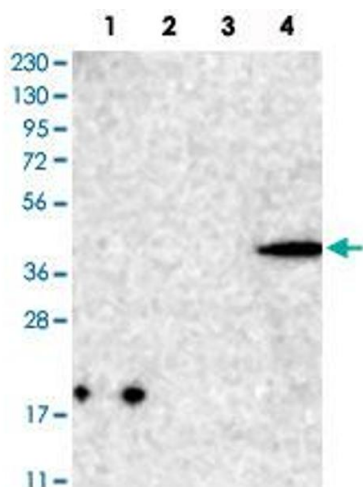
Preservative: Sodium azide

Precaution of Use: This product contains Sodium azide: a POISONOUS AND HAZARDOUS SUBSTANCE which should be handled by trained staff only.

Storage: 4 °C,-20 °C

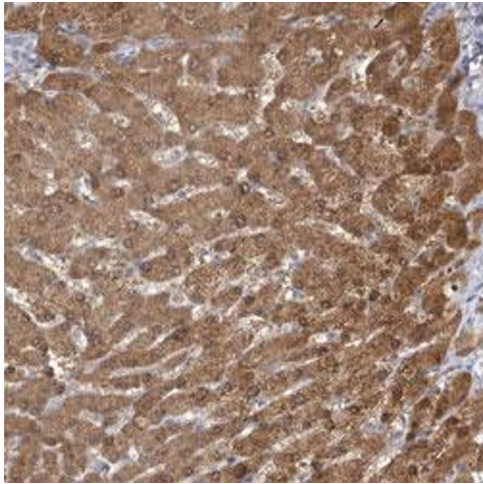
Storage Comment: Store at 4°C. For long term storage store at -20°C.
Aliquot to avoid repeated freezing and thawing.

Images



Western Blotting

Image 1. Western Blot analysis of Lane 1: RT-4 cell, Lane 2: U-251 MG sp cell, Lane 3: human plasma tissue (IgG/HSA depleted) and Lane 4: human liver tissue lysates with CNTLN polyclonal antibody .



Immunohistochemistry

Image 2. Immunohistochemical staining (Formalin-fixed paraffin-embedded sections) of human liver with CNTLN polyclonal antibody shows moderate cytoplasmic and nuclear positivity in hepatocytes.