

Datasheet for ABIN5774559
anti-KIF9 antibody



[Go to Product page](#)

1 Image

Overview

Quantity:	100 µL
Target:	KIF9
Reactivity:	Human
Host:	Rabbit
Clonality:	Polyclonal
Conjugate:	This KIF9 antibody is un-conjugated
Application:	Immunohistochemistry (Paraffin-embedded Sections) (IHC (p))

Product Details

Purpose:	Rabbit polyclonal antibody raised against partial recombinant human KIF9
Immunogen:	Recombinant protein corresponding to human KIF9.
Sequence:	GATENYKHRG ILPRALQQVF RMIEERPTHA ITVRVSYLEI YNESLFDLLS TLPYVGPSVT PMTIVENPQG VFIKGLSVHL TSQEEDAFSL LFEGETNR II ASHTMNKNSS RSHCIFTIYL
Isotype:	IgG
Cross-Reactivity:	Human

Target Details

Target:	KIF9
Alternative Name:	KIF9 (KIF9 Products)
Background:	Full Gene Name: kinesin family member 9

Target Details

Synonyms: MGC104186

Gene ID: 64147

Application Details

Application Notes: Immunohistochemistry (Formalin/PFA-fixed paraffin-embedded sections) (1:20-1:50)
The optimal working dilution should be determined by the end user.

Restrictions: For Research Use only

Handling

Format: Liquid

Buffer: In PBS, pH 7.2 (40 % glycerol, 0.02 % sodium azide).

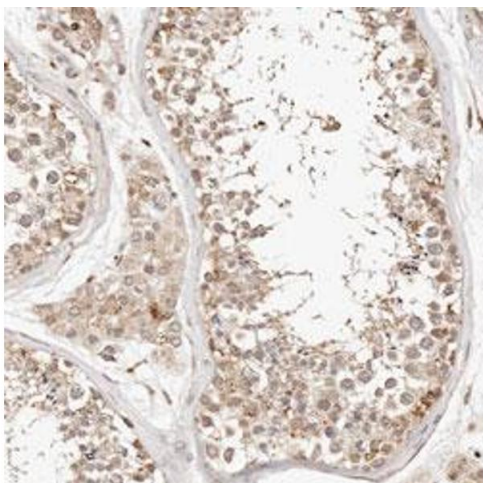
Preservative: Sodium azide

Precaution of Use: This product contains Sodium azide: a POISONOUS AND HAZARDOUS SUBSTANCE which should be handled by trained staff only.

Storage: 4 °C, -20 °C

Storage Comment: Store at 4°C. For long term storage store at -20°C.
Aliquot to avoid repeated freezing and thawing.

Images



Immunohistochemistry

Image 1. Immunohistochemical staining (Formalin-fixed paraffin-embedded sections) of human testis with KIF9 polyclonal antibody shows moderate cytoplasmic positivity in cells in seminiferous ducts and Leydig cells.