

Datasheet for ABIN5774575
anti-METTL12 antibody[Go to Product page](#)

1 Image

Overview

Quantity:	100 µL
Target:	METTL12
Reactivity:	Human
Host:	Rabbit
Clonality:	Polyclonal
Application:	Immunohistochemistry (Paraffin-embedded Sections) (IHC (p))

Product Details

Purpose:	Rabbit polyclonal antibody raised against partial recombinant human LOC751071.
Immunogen:	Recombinant protein corresponding to human LOC751071.
Sequence:	GTWDAVARGG LPRAYQLLSE CLRVLNPQGT LIQFSDEDPD VRLPCLEQGS YGWTVTQEL GPFRGITYFA Y
Isotype:	IgG
Cross-Reactivity:	Human

Target Details

Target:	METTL12
Alternative Name:	LOC751071 (METTL12 Products)
Background:	Full Gene Name: methyltransferase LOC751071, mitochondrial-like
Gene ID:	751071

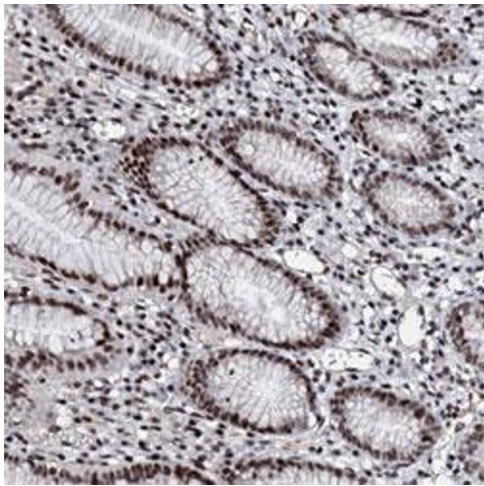
Application Details

Application Notes:	Immunohistochemistry (Formalin/PFA-fixed paraffin-embedded sections) (1:50-1:200) The optimal working dilution should be determined by the end user.
Restrictions:	For Research Use only

Handling

Format:	Liquid
Buffer:	In PBS, pH 7.2 (40 % glycerol, 0.02 % sodium azide).
Preservative:	Sodium azide
Precaution of Use:	This product contains Sodium azide: a POISONOUS AND HAZARDOUS SUBSTANCE which should be handled by trained staff only.
Storage:	4 °C,-20 °C
Storage Comment:	Store at 4°C for short term storage. For long term storage store at -20°C. Aliquot to avoid repeated freezing and thawing.

Images



Immunohistochemistry

Image 1. Immunohistochemical staining (Formalin-fixed paraffin-embedded sections) of human stomach with LOC751071 polyclonal antibody shows strong nuclear positivity in glandular cells.