



[Go to Product page](#)

Datasheet for ABIN5774612  
**anti-MS4A4E antibody**

1 Image

### Overview

Quantity:	100 µL
Target:	MS4A4E
Reactivity:	Human
Host:	Rabbit
Clonality:	Polyclonal
Conjugate:	This MS4A4E antibody is un-conjugated
Application:	Immunohistochemistry (Paraffin-embedded Sections) (IHC (p))

### Product Details

Purpose:	Rabbit polyclonal antibody raised against partial recombinant human MS4A4E.
Immunogen:	Recombinant protein corresponding to human MS4A4E.
Sequence:	LQQELEQQKV WNYLKNLSWR IMGSYLCFGE RSELKPL
Isotype:	IgG
Cross-Reactivity:	Human

### Target Details

Target:	MS4A4E
Alternative Name:	MS4A4E ( <a href="#">MS4A4E Products</a> )
Background:	Full Gene Name: membrane-spanning 4-domains, subfamily A, member 4E
Gene ID:	643680

## Application Details

---

Application Notes: Immunohistochemistry (Formalin/PFA-fixed paraffin-embedded sections) (1:20-1:50)  
The optimal working dilution should be determined by the end user.

---

Restrictions: For Research Use only

---

## Handling

---

Format: Liquid

---

Buffer: In PBS, pH 7.2 (40 % glycerol, 0.02 % sodium azide).

---

Preservative: Sodium azide

---

Precaution of Use: This product contains Sodium azide: a POISONOUS AND HAZARDOUS SUBSTANCE which should be handled by trained staff only.

---

Storage: 4 °C,-20 °C

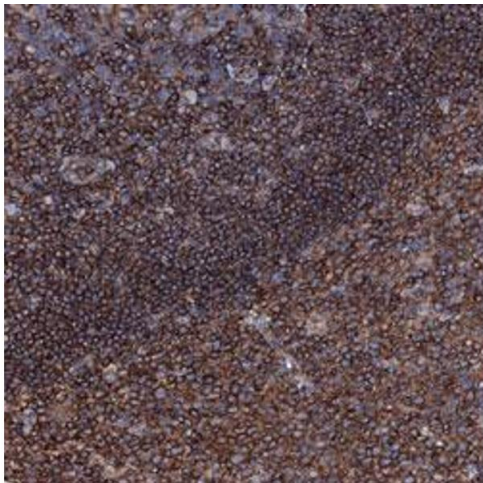
---

Storage Comment: Store at 4°C for short term storage. For long term storage store at -20°C.  
Aliquot to avoid repeated freezing and thawing.

---

## Images

---



### Immunohistochemistry

**Image 1.** Immunohistochemical staining (Formalin-fixed paraffin-embedded sections) of human tonsil with MS4A4E polyclonal antibody shows strong cytoplasmic positivity in non-germinal center cells and germinal center cells.