

Datasheet for ABIN5774718

anti-SLC22A7 antibody[Go to Product page](#)**1** Image

Overview

Quantity:	100 µL
Target:	SLC22A7
Reactivity:	Human
Host:	Rabbit
Clonality:	Polyclonal
Conjugate:	This SLC22A7 antibody is un-conjugated
Application:	Immunohistochemistry (Paraffin-embedded Sections) (IHC (p))

Product Details

Purpose:	Rabbit polyclonal antibody raised against partial recombinant human SLC22A7.
Immunogen:	Recombinant protein corresponding to human SLC22A7.
Sequence:	QAQLPETIQD VERKSAPTSL QEEEMPMKQV QN
Isotype:	IgG
Cross-Reactivity:	Human

Target Details

Target:	SLC22A7
Alternative Name:	SLC22A7 (SLC22A7 Products)
Background:	Full Gene Name: solute carrier family 22 (organic anion transporter), member 7 Synonyms: MGC24091,MGC45202,NLT,OAT2

Target Details

Gene ID: 10864

Application Details

Application Notes: Immunohistochemistry (Formalin/PFA-fixed paraffin-embedded sections) (1:200-1:500)
The optimal working dilution should be determined by the end user.

Restrictions: For Research Use only

Handling

Format: Liquid

Buffer: In PBS, pH 7.2 (40 % glycerol, 0.02 % sodium azide).

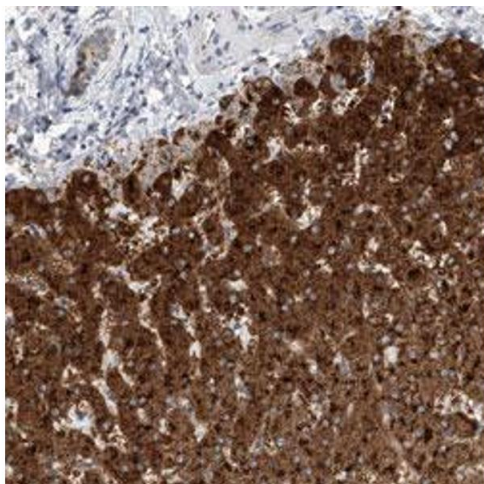
Preservative: Sodium azide

Precaution of Use: This product contains Sodium azide: a POISONOUS AND HAZARDOUS SUBSTANCE which should be handled by trained staff only.

Storage: 4 °C, -20 °C

Storage Comment: Store at 4°C for short term storage. For long term storage store at -20°C.
Aliquot to avoid repeated freezing and thawing.

Images



Immunohistochemistry

Image 1. Immunohistochemical staining (Formalin-fixed paraffin-embedded sections) of human liver with SLC22A7 polyclonal antibody shows strong granular cytoplasmic positivity in hepatocytes.