

Datasheet for ABIN5774720
**anti-Solute Carrier Family 5 (Sodium/inositol Cotransporter),
Member 11 (SLC5A11) antibody**

[Go to Product page](#)

2 Images

Overview

Quantity:	100 µL
Target:	Solute Carrier Family 5 (Sodium/inositol Cotransporter), Member 11 (SLC5A11)
Reactivity:	Human
Host:	Rabbit
Clonality:	Polyclonal
Conjugate:	Un-conjugated
Application:	Immunohistochemistry (Paraffin-embedded Sections) (IHC (p)), Immunofluorescence (IF)

Product Details

Purpose:	Rabbit polyclonal antibody raised against partial recombinant human SLC5A11.
Immunogen:	Recombinant protein corresponding to human SLC5A11.
Sequence:	EPPSKEMVSH LTWFTRHDPV VQKEQAPPAA PLSLTLSQNG MPEASSSSSV QFEMVQENTS KTHSCDMTPK QSKVVKAILW LCGIQEK GK
Isotype:	IgG
Cross-Reactivity:	Human

Target Details

Target:	Solute Carrier Family 5 (Sodium/inositol Cotransporter), Member 11 (SLC5A11)
Alternative Name:	SLC5A11 (SLC5A11 Products)
Background:	Full Gene Name: solute carrier family 5 (sodium/glucose cotransporter), member 11

Target Details

Synonyms: KST1,RKST1,SGLT6,SMIT2

Gene ID: 115584

Application Details

Application Notes: Immunofluorescence (1-4 µg/mL)
Immunohistochemistry (Formalin/PFA-fixed paraffin-embedded sections) (1:500-1:1000)
The optimal working dilution should be determined by the end user.

Restrictions: For Research Use only

Handling

Format: Liquid

Buffer: In PBS, pH 7.2 (40 % glycerol, 0.02 % sodium azide).

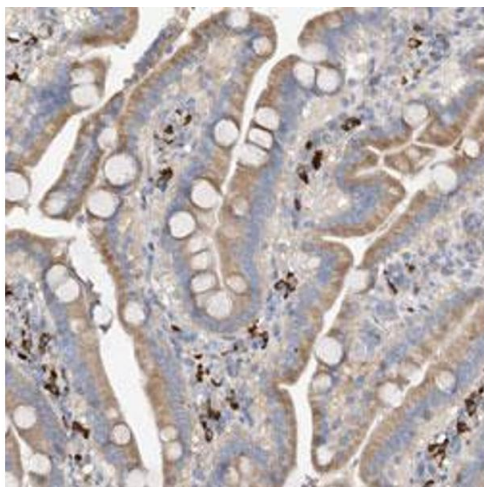
Preservative: Sodium azide

Precaution of Use: This product contains Sodium azide: a POISONOUS AND HAZARDOUS SUBSTANCE which should be handled by trained staff only.

Storage: 4 °C,-20 °C

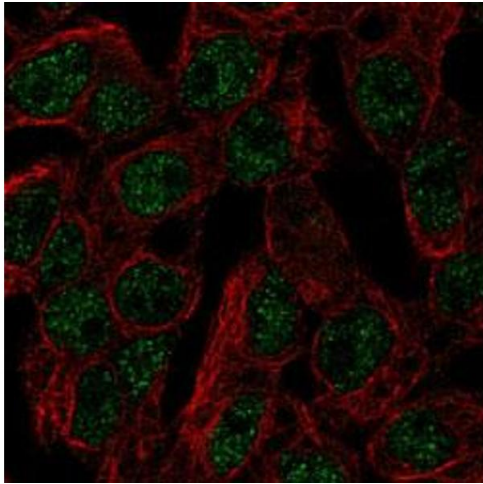
Storage Comment: Store at 4°C for short term storage. For long term storage store at -20°C.
Aliquot to avoid repeated freezing and thawing.

Images



Immunohistochemistry

Image 1. Immunohistochemical staining (Formalin-fixed paraffin-embedded sections) of human duodenum with SLC5A11 polyclonal antibody shows moderate cytoplasmic positivity in glandular cells.



Immunofluorescence

Image 2. Immunofluorescent staining of HepG2 with SLC5A11 polyclonal antibody (Green) shows localization to nucleoplasm.