



[Go to Product page](#)

Datasheet for ABIN5774796

## anti-CRYAB antibody

### 4 Images

#### Overview

Quantity:	50 µL
Target:	CRYAB
Reactivity:	Human
Host:	Mouse
Clonality:	Monoclonal
Conjugate:	This CRYAB antibody is un-conjugated
Application:	Western Blotting (WB), Immunohistochemistry (Paraffin-embedded Sections) (IHC (p)), Immunofluorescence (IF), Immunoprecipitation (IP), Flow Cytometry (FACS)

#### Product Details

Purpose:	Mouse monoclonal antibody raised against full length recombinant human CRYAB.
Immunogen:	Recombinant protein corresponding to full length human CRYAB from HEK293T cell.
Clone:	6D11
Isotype:	IgG1
Cross-Reactivity:	Human

#### Target Details

Target:	CRYAB
Alternative Name:	CRYAB ( <a href="#">CRYAB Products</a> )
Background:	Full Gene Name: crystallin, alpha B

## Target Details

---

Synonyms: CRYA2,CTPP2,HSPB5

---

Gene ID: 1410

## Application Details

---

Application Notes: Flow Cytometry (1:100)  
Immunofluorescence (1:50-1:100)  
Immunohistochemistry (Formalin/PFA-fixed paraffin-embedded sections) (10 µg/mL)  
Immunoprecipitation  
Western Blot (1:500-1:1000)  
The optimal working dilution should be determined by the

---

Restrictions: For Research Use only

## Handling

---

Format: Liquid

---

Buffer: In PBS, pH 7.3 (50 % glycerol, 1 % BSA, 0.02 % sodium azide).

---

Preservative: Sodium azide

---

Precaution of Use: This product contains Sodium azide: a POISONOUS AND HAZARDOUS SUBSTANCE which should be handled by trained staff only.

---

Storage: -20 °C

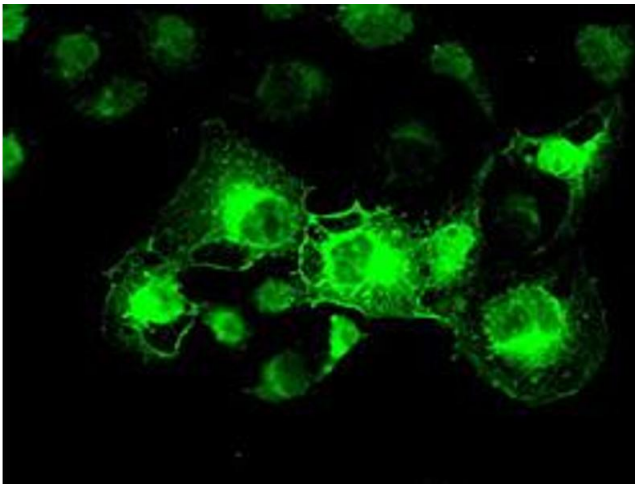
---

Storage Comment: Store at -20°C.  
Aliquot to avoid repeated freezing and thawing.



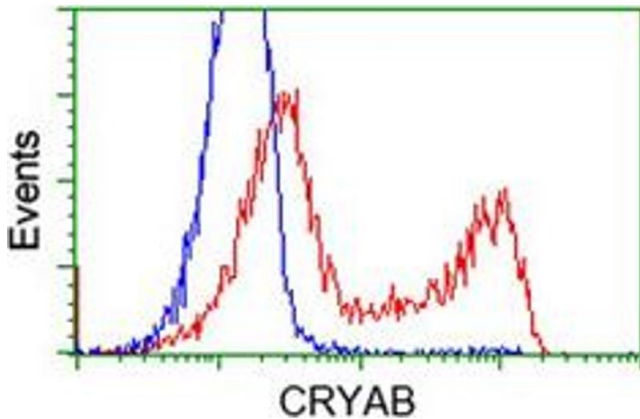
### Western Blotting

**Image 1.** Western Blot analysis of HEK293T cells (Lane 1: transfected with pCMV6-ENTRY control and Lane 2: transfected with pCMV6-ENTRY CRYAB cDNA) with CRYAB monoclonal antibody, clone 6D11 .



### Immunofluorescence

**Image 2.** Immunofluorescent staining of COS7 cells transiently transfected by pCMV6-ENTRY CRYAB with CRYAB monoclonal antibody, clone 6D11 .



### Flow Cytometry

**Image 3.** Flow cytometric analysis of HEK293T cells transfected with either overexpress plasmid (Red) or empty vector control plasmid (Blue) using CRYAB monoclonal antibody, clone 6D11 .

Please check the [product details page](#) for more images. Overall 4 images are available for ABIN5774796.