

Datasheet for ABIN5774800

anti-FBLN3 antibody

3 Images

[Go to Product page](#)

Overview

Quantity:	50 µL
Target:	FBLN3
Reactivity:	Human
Host:	Mouse
Clonality:	Monoclonal
Conjugate:	This FBLN3 antibody is un-conjugated
Application:	Western Blotting (WB), Flow Cytometry (FACS), Immunohistochemistry (Paraffin-embedded Sections) (IHC (p))

Product Details

Purpose:	Mouse monoclonal antibody raised against full length recombinant human EFEMP1.
Immunogen:	Recombinant protein corresponding to full length human EFEMP1 from HEK293T cell.
Clone:	1D9
Isotype:	IgG2a
Cross-Reactivity:	Human

Target Details

Target:	FBLN3
Alternative Name:	EFEMP1 (FBLN3 Products)
Background:	Full Gene Name: EGF-containing fibulin-like extracellular matrix protein 1

Target Details

	Synonyms: DHRD,DRAD,FBLN3,FBNL,FLJ35535,MGC111353,MLVT,MTLV,S1-5
Gene ID:	2202
Pathways:	EGFR Signaling Pathway

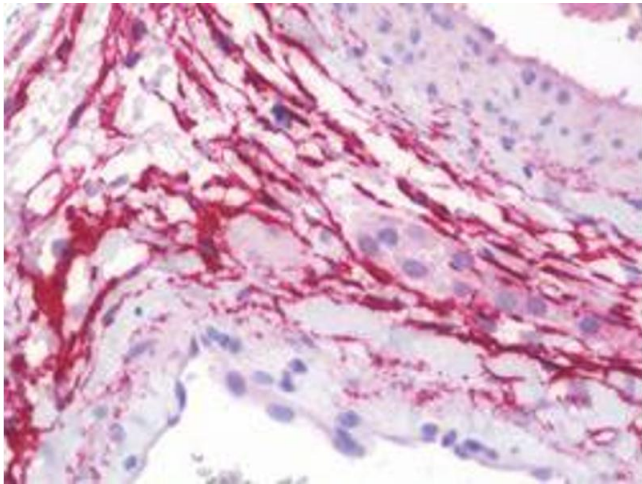
Application Details

Application Notes:	Flow Cytometry (1:100) Immunohistochemistry (Formalin/PFA-fixed paraffin-embedded sections) (10 µg/mL) Western Blot (1:200-1:500) The optimal working dilution should be determined by the end user.
Restrictions:	For Research Use only

Handling

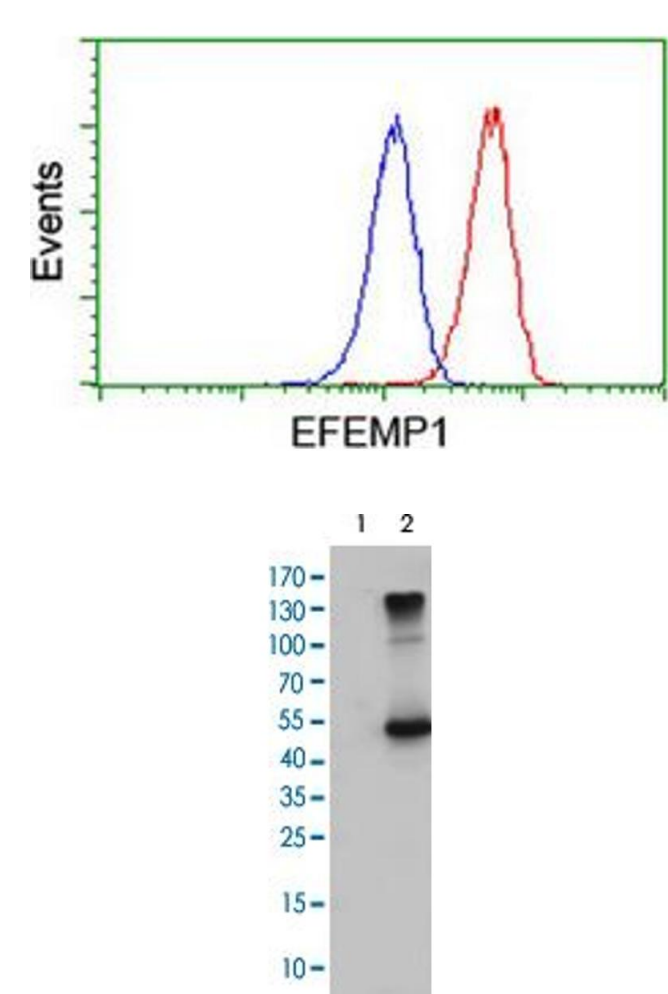
Format:	Liquid
Buffer:	In PBS, pH 7.3 (50 % glycerol, 1 % BSA, 0.02 % sodium azide).
Preservative:	Sodium azide
Precaution of Use:	This product contains Sodium azide: a POISONOUS AND HAZARDOUS SUBSTANCE which should be handled by trained staff only.
Storage:	-20 °C
Storage Comment:	Store at -20°C. Aliquot to avoid repeated freezing and thawing.

Images



Immunohistochemistry

Image 1. Immunohistochemical staining (Formalin-fixed paraffin-embedded sections) of human testis with EFEMP1 monoclonal antibody, clone 1D9 .



Flow Cytometry

Image 2. Flow cytometric analysis of Jurkat cells with EFEMP1 monoclonal antibody, clone 1D9 (Red).

Western Blotting

Image 3. Western Blot analysis of HEK293T cells (Lane 1: transfected with pCMV6-ENTRY control and Lane 2: transfected with pCMV6-ENTRY EFEMP1 cDNA) with EFEMP1 monoclonal antibody, clone 1D9 .