

Datasheet for ABIN5774804

**anti-GLB1 antibody**

## 4 Images

[Go to Product page](#)

## Overview

Quantity:	50 µL
Target:	GLB1
Reactivity:	Human
Host:	Mouse
Clonality:	Monoclonal
Conjugate:	This GLB1 antibody is un-conjugated
Application:	Western Blotting (WB), Immunofluorescence (IF), Flow Cytometry (FACS), Immunohistochemistry (Paraffin-embedded Sections) (IHC (p))

## Product Details

Purpose:	Mouse monoclonal antibody raised against full length recombinant human GLB1.
Immunogen:	Recombinant protein corresponding to full length human GLB1 from HEK293T cell.
Clone:	5H2
Isotype:	IgG1
Cross-Reactivity:	Human

## Target Details

Target:	GLB1
Alternative Name:	GLB1 ( <a href="#">GLB1 Products</a> )
Background:	Full Gene Name: galactosidase, beta 1

## Target Details

	Synonyms: EBP,ELNR1
Gene ID:	2720
Pathways:	<a href="#">Glycosaminoglycan Metabolic Process</a>

## Application Details

Application Notes:	Flow Cytometry (1:100) Immunofluorescence (1:100) Immunohistochemistry (Formalin/PFA-fixed paraffin-embedded sections) (10 µg/mL) Western Blot (1:1000) The optimal working dilution should be determined by the end user.
Restrictions:	For Research Use only

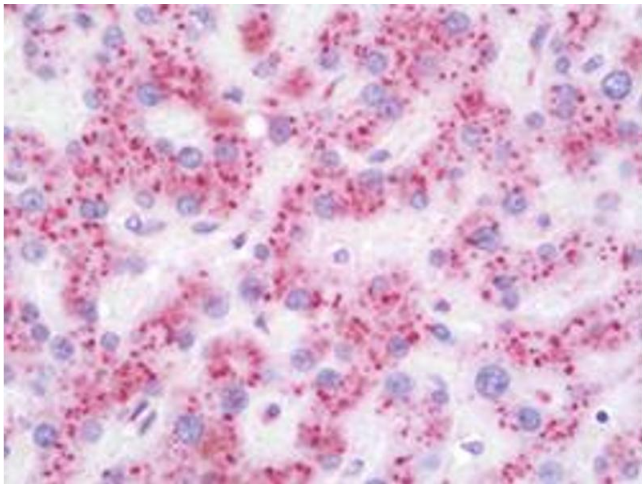
## Handling

Format:	Liquid
Buffer:	In PBS, pH 7.3 (50 % glycerol, 1 % BSA, 0.02 % sodium azide).
Preservative:	Sodium azide
Precaution of Use:	This product contains Sodium azide: a POISONOUS AND HAZARDOUS SUBSTANCE which should be handled by trained staff only.
Storage:	-20 °C
Storage Comment:	Store at -20°C. Aliquot to avoid repeated freezing and thawing.



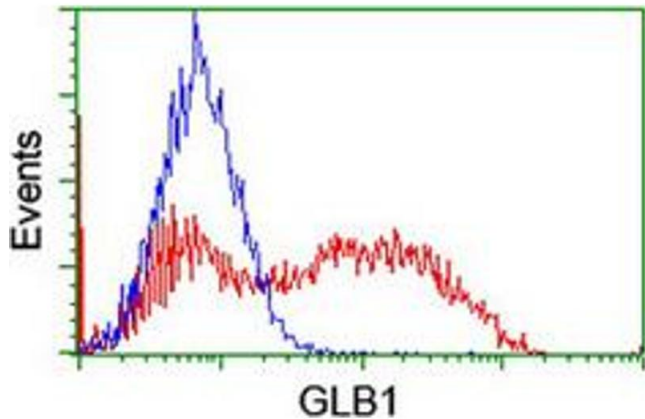
#### Western Blotting

**Image 1.** Western Blot analysis of HEK293T cells (Lane 1: transfected with pCMV6-ENTRY control and Lane 2: transfected with pCMV6-ENTRY GLB1 cDNA) with GLB1 monoclonal antibody, clone 5H2 .



#### Immunohistochemistry

**Image 2.** Immunohistochemical staining (Formalin-fixed paraffin-embedded sections) of human liver with GLB1 monoclonal antibody, clone 5H2 .



#### Flow Cytometry

**Image 3.** Flow cytometric analysis of HEK293T cells transfected with either overexpress plasmid (Red) or empty vector control plasmid (Blue) using GLB1 monoclonal antibody, clone 5H2 .

Please check the [product details page](#) for more images. Overall 4 images are available for ABIN5774804.