

Datasheet for ABIN5774854

anti-OAT antibody[Go to Product page](#)**1** Image

Overview

Quantity:	50 µL
Target:	OAT
Reactivity:	Human
Host:	Mouse
Clonality:	Monoclonal
Conjugate:	This OAT antibody is un-conjugated
Application:	Immunohistochemistry (Paraffin-embedded Sections) (IHC (p))

Product Details

Purpose:	Mouse monoclonal antibody raised against recombinant human OAT.
Immunogen:	Recombinant protein corresponding to human OAT.
Clone:	AT23A2
Isotype:	IgG1
Cross-Reactivity:	Human

Target Details

Target:	OAT
Alternative Name:	OAT (OAT Products)
Background:	Full Gene Name: ornithine aminotransferase (gyrate atrophy) Synonyms: DKFZp781A11155,HOGA

Target Details

Gene ID: 4942

Application Details

Application Notes: Immunohistochemistry (Formalin/PFA-fixed paraffin-embedded sections) (5 µg/mL)
The optimal working dilution should be determined by the end user.

Restrictions: For Research Use only

Handling

Format: Liquid

Buffer: In PBS, pH 7.4 (0.09 % sodium azide).

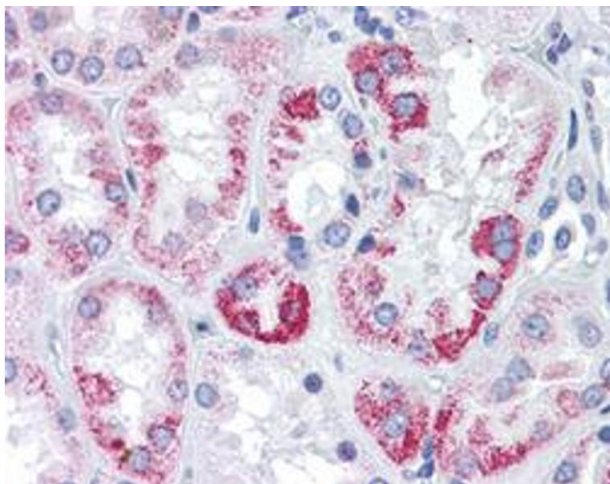
Preservative: Sodium azide

Precaution of Use: This product contains Sodium azide: a POISONOUS AND HAZARDOUS SUBSTANCE which should be handled by trained staff only.

Storage: 4 °C, -20 °C

Storage Comment: Store at 4°C. For long term storage store at -20°C.
Aliquot to avoid repeated freezing and thawing.

Images



Immunohistochemistry

Image 1. Immunohistochemical staining (Formalin-fixed paraffin-embedded sections) of human kidney with OAT monoclonal antibody, clone AT23A2 .