



[Go to Product page](#)

Datasheet for ABIN5774955
anti-Citrulline antibody (Biotin)

1 Image

Overview

Quantity:	100 µg
Target:	Citrulline (CIT)
Reactivity:	Human
Host:	Mouse
Clonality:	Monoclonal
Conjugate:	This Citrulline antibody is conjugated to Biotin
Application:	Western Blotting (WB), ELISA, Immunocytochemistry (ICC), Immunofluorescence (IF)

Product Details

Purpose:	Mouse monoclonal antibody raised against synthetic peptide of Citrulline.
Immunogen:	Synthetic L-Citrulline conjugated to Keyhole Limpet Hemocyanin (KLH).
Clone:	2D3-1
Isotype:	IgG1
Cross-Reactivity:	Human

Target Details

Target:	Citrulline (CIT)
Alternative Name:	Citrulline (CIT Products)
Target Type:	Amino Acid

Application Details

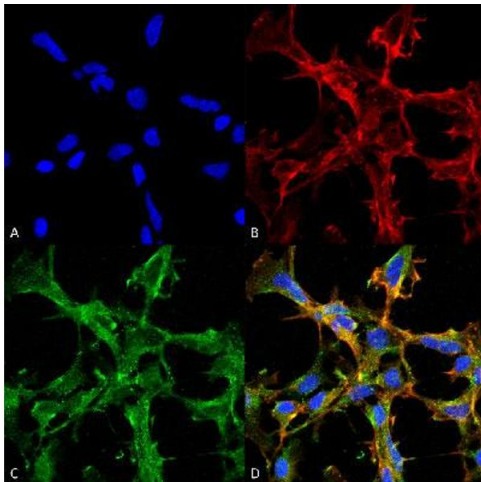
Application Notes:	ELISA (1:1000) Immunocytochemistry (1:50) Immunofluorescence (1:50) Western Blot (1:1000) The optimal working dilution should be determined by the end user.
--------------------	--

Restrictions:	For Research Use only
---------------	-----------------------

Handling

Format:	Liquid
Buffer:	In PBS, pH 7.4 (50 % glycerol, 0.09 % sodium azide).
Preservative:	Sodium azide
Precaution of Use:	This product contains Sodium azide: a POISONOUS AND HAZARDOUS SUBSTANCE which should be handled by trained staff only.
Storage:	-20 °C
Storage Comment:	Store at -20°C.

Images



Immunocytochemistry

Image 1. Immunocytochemical staining of HEK293 with Citrulline monoclonal antibody, clone 2D3.1 (Biotin) . (A) DAPI (blue) nuclear stain, (B) Phalloidin Alex Fluor 633 F-Actin stain, (C) Citrulline Antibody and (D) Composite.