



[Go to Product page](#)

Datasheet for ABIN5775098

anti-Phosphotyrosine antibody

5 Images

Overview

Quantity:	100 µg
Target:	Phosphotyrosine
Reactivity:	Please inquire
Host:	Mouse
Clonality:	Monoclonal
Conjugate:	This Phosphotyrosine antibody is un-conjugated
Application:	Western Blotting (WB), Immunoprecipitation (IP), Immunofluorescence (IF), Flow Cytometry (FACS), ELISA, Immunocytochemistry (ICC)

Product Details

Purpose:	Mouse monoclonal antibody raised against Phosphotyrosine.
Immunogen:	Phosphotyrosine containing carrier protein.
Clone:	E10
Isotype:	IgG1, IgG2a
Specificity:	The antibody is specific for proteins containing phosphotyrosine residues and phosphotyrosine peptides. It does not cross-react with phosphoserine, phosphothreonine or nonphosphorylated tyrosine residues.
Cross-Reactivity (Details):	The antibody is specific for proteins containing phosphotyrosine residues and phosphotyrosine peptides. It does not cross-react with phosphoserine, phosphothreonine or nonphosphorylated tyrosine residues.

Target Details

Target: Phosphotyrosine

Abstract: [Phosphotyrosine Products](#)

Target Type: Amino Acid

Application Details

Application Notes: ELISA (0.1 µg/mL)
Flow Cytometry (4 µg/mL)
Immunocytochemistry (4 µg/mL)
Immunofluorescence (4 µg/mL)
Immunoprecipitation (1-4 µg/mL)
Western Blot (1-2 µg/mL)
The optimal working dilution should be determined by the end user.

Restrictions: For Research Use only

Handling

Format: Lyophilized

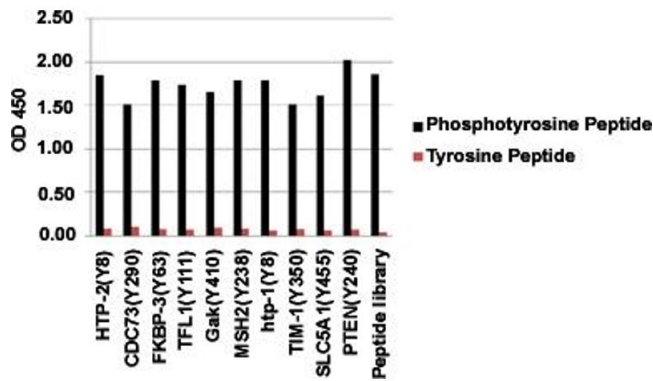
Buffer: Lyophilized from 0.5 mg/mL PBS, pH 7.4 (0.02 % sodium azide).

Preservative: Sodium azide

Precaution of Use: This product contains Sodium azide: a POISONOUS AND HAZARDOUS SUBSTANCE which should be handled by trained staff only.

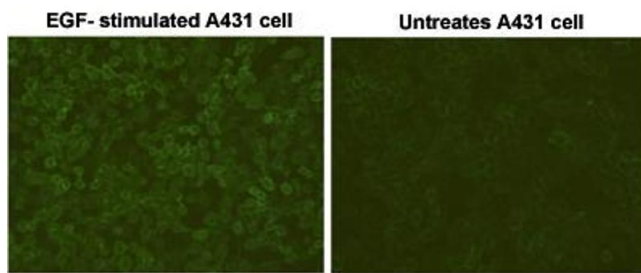
Storage: 4 °C, -20 °C

Storage Comment: Store at -20°C or lower.
Reconstitute the lyophilized powder with deionized water (or equivalent) to an antibody concentration of 0.5 mg/mL.
The reconstituted antibody can be stored for 2-3 weeks at 4°C. For long term storage, aliquot and store at -20°C or lower.
Aliquot to avoid repeated freezing and thawing.



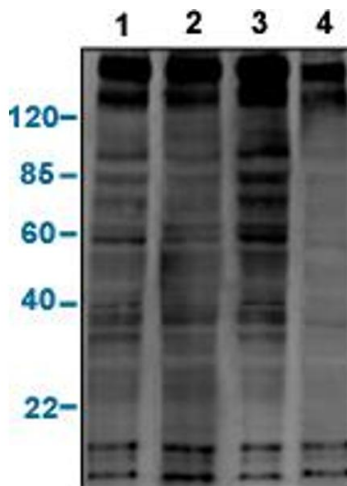
ELISA

Image 1. ELISA analysis of various phosphotyrosine peptides and corresponding non-phosphorylated peptides with Phosphotyrosine monoclonal antibody, clone E10 .



Immunofluorescence

Image 2. Immunofluorescent staining of EGF-stimulated A431 cells and untreated A431 cells with Phosphotyrosine monoclonal antibody, clone E10 .



Western Blotting

Image 3. Western blot analysis of a panel of phosphotyrosine antibodies with EGF-stimulated A431 cell lysates. Lane 1: Phosphotyrosine monoclonal antibody, clone 5E10E1 Lane 2: Phosphotyrosine monoclonal antibody, clone 18E10D2 Lane 3: Phosphotyrosine monoclonal antibody, clone E10

Please check the [product details page](#) for more images. Overall 5 images are available for ABIN5775098.