

Datasheet for ABIN5775113  
**anti-METTL5 antibody (AA 1-209)**[Go to Product page](#)

## 1 Image

## Overview

Quantity:	50 µg
Target:	METTL5
Binding Specificity:	AA 1-209
Reactivity:	Human
Host:	Mouse
Clonality:	Polyclonal
Conjugate:	This METTL5 antibody is un-conjugated
Application:	Western Blotting (WB)

## Product Details

Purpose:	Mouse polyclonal antibody raised against a full-length human METTL5 protein.
Immunogen:	METTL5 (NP_054887, 1 a.a. ~ 209 a.a) full-length human protein.
Sequence:	MKKVRLKELE SRLQQVDGFE KPKLLLEQYP TRPHIAACML YTIHNTYDDI ENKVVADLGC GCGVLSIGTA MLGAGLCVGF DIDEALEIF NRNAEEFELT NIDMVQCDVC LLSNRMSKSF DTVIMNPPFG TKNNKGTDMA FLKTALEMAR TAVYSLHKSS TREHVQKKAA EWKIKIDIIA ELRYDLPASY KFHKKKSVDI EVDLIRFSF
Cross-Reactivity:	Human
Characteristics:	This antibody is validated with a full-length human protein expressed from a mammalian transfected lysate, demonstrating high reactivity, sensitivity and specificity. In addition, this antibody has the ability to recognize both linear and conformational protein epitopes for maximum antibody performance!

## Target Details

Target:	METTL5
Alternative Name:	METTL5 ( <a href="#">METTL5 Products</a> )
Background:	Full Gene Name: methyltransferase like 5 Synonyms: FLJ10459,HSPC133
Gene ID:	29081
NCBI Accession:	<a href="#">NM_014168</a>

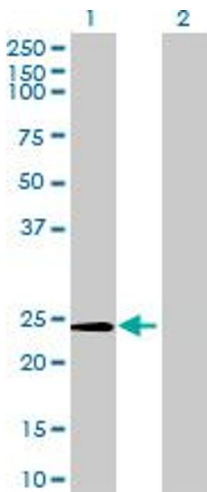
## Application Details

Application Notes:	Optimal working dilution should be determined by the investigator.
Restrictions:	For Research Use only

## Handling

Buffer:	In 1x PBS, pH 7.4
Storage:	-20 °C
Storage Comment:	Store at -20°C or lower. Aliquot to avoid repeated freezing and thawing.

## Images



### Western Blotting

**Image 1.** Western Blot analysis of METTL5 expression in transfected 293T cell line ( H00029081-T01 ) by METTL5 MaxPab polyclonal antibody. Lane 1: METTL5 transfected lysate(22.99 KDa). Lane 2: Non-transfected lysate.