



[Go to Product page](#)

Datasheet for ABIN5775900  
**anti-ALDH5A1 antibody**

2 Images

### Overview

Quantity:	100 µL
Target:	ALDH5A1
Reactivity:	Human
Host:	Mouse
Clonality:	Monoclonal
Conjugate:	This ALDH5A1 antibody is un-conjugated
Application:	Please inquire

### Product Details

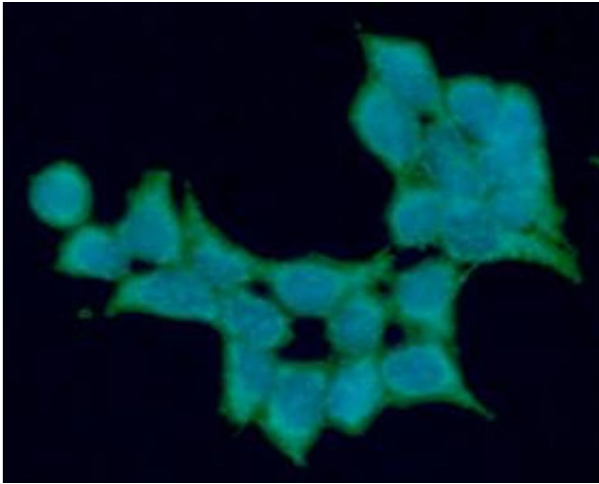
Clone:	AT17F5
Characteristics:	Neuroscience

### Target Details

Target:	ALDH5A1
Alternative Name:	ALDH5A1 ( <a href="#">ALDH5A1 Products</a> )
Pathways:	<a href="#">Monocarboxylic Acid Catabolic Process</a>

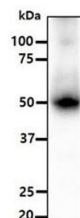
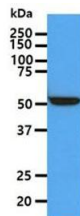
### Application Details

Restrictions:	For Research Use only
---------------	-----------------------



### Immunofluorescence

**Image 1.** ICC/IF analysis of ALDH5A1 in 293T cells line, stained with DAPI (Blue) for nucleus staining and monoclonal anti-human ALDH5A1 antibody (1:100) with goat anti-mouse IgG-Alexa fluor 488 conjugate (Green).



### Western Blotting

**Image 2.** The HepG2 cell lysate (40ug) were resolved by SDS-PAGE, transferred to PVDF membrane and probed with anti-human ALDH5A1 antibody (1:1000). Proteins were visualized using a goat anti-mouse secondary antibody conjugated to HRP and an ECL detection system. The mouse liver tissue extract (40ug) were resolved by SDS-PAGE, transferred to PVDF membrane and probed with anti-human ALDH5A1 antibody (1:1000). Proteins were visualized using a goat anti-mouse secondary antibody conjugated to HRP and an ECL detection system.