



Datasheet for ABIN5775906

anti-MB antibody



[Go to Product page](#)

1 Image

Overview

Quantity:	100 µL
Target:	MB
Reactivity:	Human
Host:	Mouse
Clonality:	Monoclonal
Conjugate:	This MB antibody is un-conjugated
Application:	Please inquire

Product Details

Clone:	AT6E10
Characteristics:	Cardiovascular

Target Details

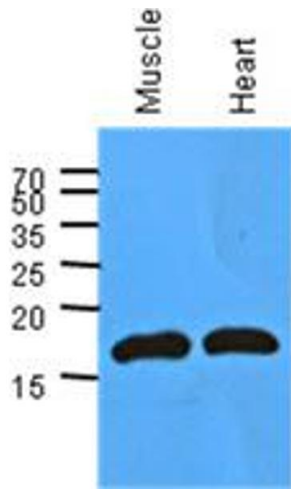
Target:	MB
Abstract:	MB Products

Application Details

Restrictions:	For Research Use only
---------------	-----------------------

Handling

Format:	Liquid
---------	--------



Western Blotting

Image 1. The extracts of mouse muscle and heart (40ug) were resolved by SDS-PAGE, transferred to PVDF membrane and probed with anti-human MB antibody (1:1000). Proteins were visualized using a goat anti-mouse secondary antibody conjugated to HRP and an ECL detection system.