

Datasheet for ABIN5775942
anti-FKBP14 antibody



[Go to Product page](#)

2 Images

Overview

Quantity:	100 µL
Target:	FKBP14
Reactivity:	Human
Host:	Mouse
Clonality:	Monoclonal
Conjugate:	This FKBP14 antibody is un-conjugated
Application:	Please inquire

Product Details

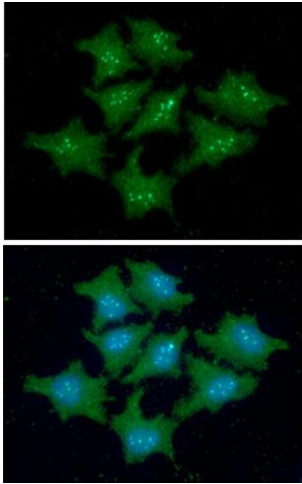
Clone:	AT18E2
Characteristics:	Heat Shock Proteins,Development,Signaling pathway

Target Details

Target:	FKBP14
Alternative Name:	FKBP14 (FKBP14 Products)
Pathways:	ER-Nucleus Signaling

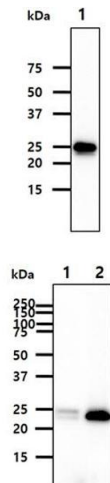
Application Details

Restrictions:	For Research Use only
---------------	-----------------------



Immunofluorescence

Image 1. ICC/IF analysis of FKBP14 in HeLa cells line, stained with DAPI (Blue) for nucleus staining and monoclonal anti-human FKBP14 antibody (1:100) with goat anti-mouse IgG-Alexa fluor 488 conjugate (Green).



Western Blotting

Image 2. The cell lysates (40ug) were resolved by SDS-PAGE, transferred to PVDF membrane and probed with anti-human FKBP14 antibody (1:1000). Proteins were visualized using a goat anti-mouse secondary antibody conjugated to HRP and an ECL detection system. Lane 1. : HeLa cell lysate
The cell lysates (20ug) were resolved by SDS-PAGE, transferred to PVDF membrane and probed with anti-human FKBP14 antibody (1:1000). Proteins were visualized using a goat anti-mouse secondary antibody conjugated to HRP and an ECL detection system. Lane 1. : 293T cell lysate Lane 2. : FKBP14 Transfected 293T cell lysate