

Datasheet for ABIN5776039

anti-ACSF2 antibody**2** Images[Go to Product page](#)

Overview

Quantity:	100 µL
Target:	ACSF2
Reactivity:	Human
Host:	Mouse
Clonality:	Monoclonal
Conjugate:	This ACSF2 antibody is un-conjugated
Application:	Please inquire

Product Details

Clone:	AT18B4
Characteristics:	Signal Transduction, Metabolism

Target Details

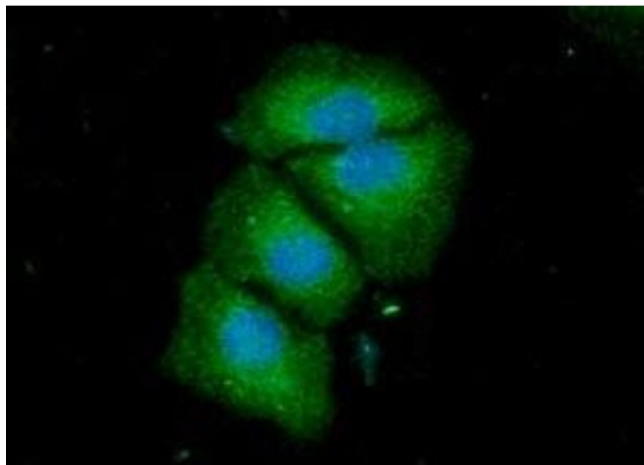
Target:	ACSF2
Alternative Name:	ACSF2 (ACSF2 Products)

Application Details

Restrictions:	For Research Use only
---------------	-----------------------

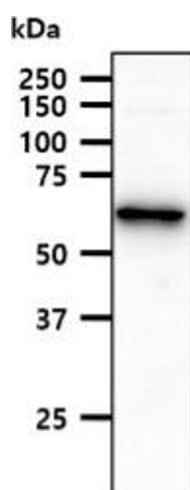
Handling

Format:	Liquid
---------	--------



Immunofluorescence

Image 1. ICC/IF analysis of ACSF2 in HeLa cells line, stained with DAPI (Blue) for nucleus staining and monoclonal anti-human ACSF2 antibody (1:100) with goat anti-mouse IgG-Alexa fluor 488 conjugate (Green)



Western Blotting

Image 2. The HepG2 cell lysate (40ug) were resolved by SDS-PAGE, transferred to PVDF membrane and probed with anti-human ACSF2 antibody (1:1000). Proteins were visualized using a goat anti-mouse secondary antibody conjugated to HRP and an ECL detection system.