

Datasheet for ABIN5776044

**anti-Adenylosuccinate Lyase antibody****2** Images[Go to Product page](#)

## Overview

Quantity:	100 µL
Target:	Adenylosuccinate Lyase (ADSL)
Reactivity:	Human
Host:	Mouse
Clonality:	Monoclonal
Conjugate:	This Adenylosuccinate Lyase antibody is un-conjugated
Application:	Please inquire

## Product Details

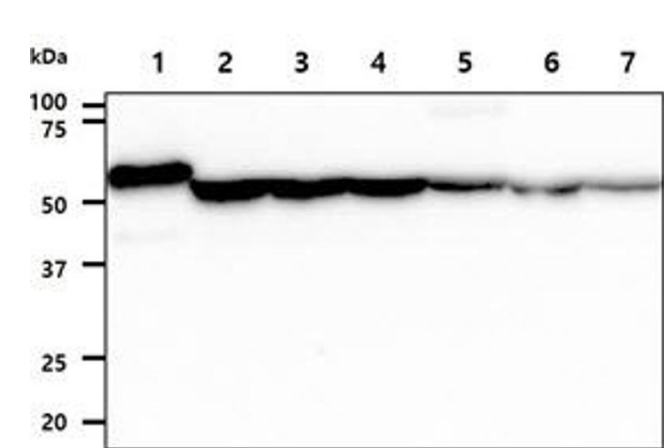
Clone:	AT16C10
Characteristics:	Signal Transduction, Metabolism

## Target Details

Target:	Adenylosuccinate Lyase (ADSL)
Alternative Name:	ADSL ( <a href="#">ADSL Products</a> )
Pathways:	<a href="#">Ribonucleoside Biosynthetic Process</a>

## Application Details

Restrictions:	For Research Use only
---------------	-----------------------



Western Blotting

**Image 1.** The Recombinant Human ADSL (20ng) and Cell lysates (40ug) were resolved by SDS-PAGE, transferred to PVDF membrane and probed with anti-human ADSL antibody (1:1000). Proteins were visualized using a goat anti-mouse secondary antibody conjugated to HRP and an ECL detection system. Lane 1. : Recombinant Protein Lane 2. : HeLa cell lysate Lane 3. : 293T cell lysate Lane 4. : Jurkat cell lysate Lane 5. : HepG2 cell lysate Lane 6. : A549 cell lysate Lane 7. : MCF7 cell lysate

Immunofluorescence

**Image 2.** ICC/IF analysis of ADSL in Hep3B cells line, stained with DAPI (Blue) for nucleus staining and monoclonal anti-human ADSL antibody (1:100) with goat anti-mouse IgG-Alexa fluor 488 conjugate (Green).

