

Datasheet for ABIN5776065
anti-BCL2A1 antibody



[Go to Product page](#)

1 Image

Overview

Quantity:	100 µL
Target:	BCL2A1
Reactivity:	Human
Host:	Mouse
Clonality:	Monoclonal
Conjugate:	This BCL2A1 antibody is un-conjugated
Application:	Please inquire

Product Details

Clone:	AT2G5
Characteristics:	Serology, Transportation, Metabolism, Apoptosis

Target Details

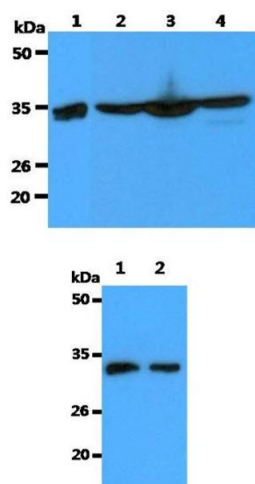
Target:	BCL2A1
Alternative Name:	A1 (BCL2A1 Products)

Application Details

Restrictions:	For Research Use only
---------------	-----------------------

Handling

Format:	Liquid
---------	--------



Western Blotting

Image 1. Western blot analysis The Recombinant Human Annexin A1 (10ng) and Cell lysates (40ug) were resolved by SDS-PAGE, transferred to PVDF membrane and probed with anti-human Annexin A1 antibody (1:3000). Proteins were visualized using a goat anti-mouse secondary antibody conjugated to HRP and an ECL detection system. Lane 1.: Recombinant Human Annexin A1 Lane 2.: HeLa cell lysate Lane 3.: A549 cell lysate Lane 4.: A431 cell lysate The HeLa cell lysate (40ug) were resolved by SDS-PAGE, transferred to PVDF membrane and probed with anti-human Annexin A1 antibody. Proteins were visualized using a goat anti-mouse secondary antibody conjugated to HRP and an ECL detection system. Lane 1.: Anti- Annexin A1 antibody (1:10000) Lane 2.: Anti- Annexin A1 antibody (1:20000)