

Datasheet for ABIN5776141

## anti-GPD1L antibody

### 2 Images



[Go to Product page](#)

### Overview

Quantity:	100 µL
Target:	GPD1L
Reactivity:	Human
Host:	Mouse
Clonality:	Monoclonal

### Product Details

Clone:	AT14E2
Characteristics:	Signal Transduction, Metabolism

### Target Details

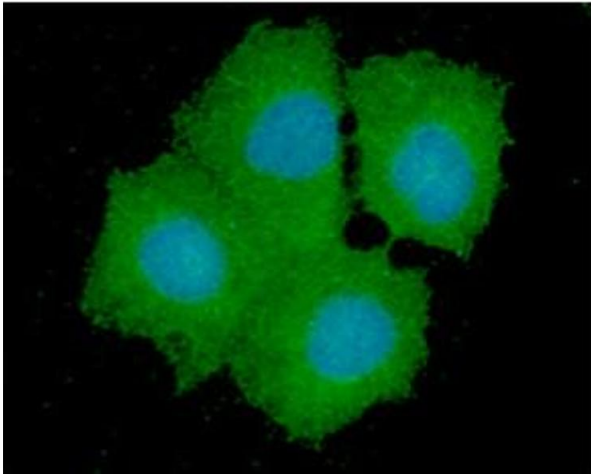
Target:	GPD1L
Alternative Name:	GPD1L ( <a href="#">GPD1L Products</a> )

### Application Details

Restrictions:	For Research Use only
---------------	-----------------------

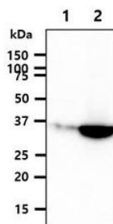
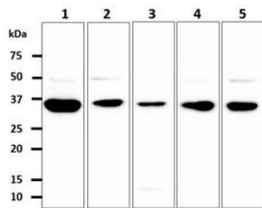
### Handling

Format:	Liquid
---------	--------



### Immunofluorescence

**Image 1.** ICC/IF analysis of GPD1L in Hep3B cells line, stained with DAPI (Blue) for nucleus staining and monoclonal anti-human GPD1L antibody (1:100) with goat anti-mouse IgG-Alexa fluor 488 conjugate (Green).



### Western Blotting

**Image 2.** The cell lysates (40ug) were resolved by SDS-PAGE, transferred to PVDF membrane and probed with anti-human GPD1L antibody (1:500). Proteins were visualized using a goat anti-mouse secondary antibody conjugated to HRP and an ECL detection system. Lane 1. : MCF7 cell lysate Lane 2. : 293T cell lysate Lane 3. : Jurkat cell lysate Lane 4 : SW480 cell lysate Lane 5 : PC3 cell lysate The cell lysates (40ug) were resolved by SDS-PAGE, transferred to PVDF membrane and probed with anti-human GPD1L antibody (1:1000). Proteins were visualized using a goat anti-mouse secondary antibody conjugated to HRP and an ECL detection system. Lane 1. : 293T cell lysate Lane 2. : GPD1L Transfected 293T cell lysate