

Datasheet for ABIN5776207

anti-LSM5 antibody**2** Images[Go to Product page](#)

Overview

Quantity:	100 µL
Target:	LSM5
Reactivity:	Human
Host:	Mouse
Clonality:	Monoclonal

Product Details

Clone:	AT25F8
Characteristics:	Epigenomics (Transcription & Translation)

Target Details

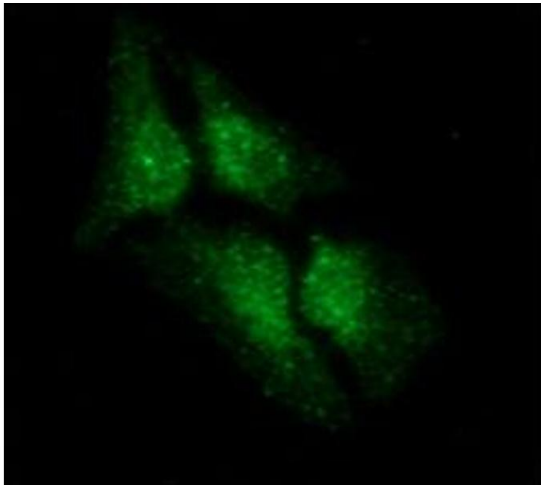
Target:	LSM5
Alternative Name:	LSM5 (LSM5 Products)
Pathways:	Response to Water Deprivation

Application Details

Restrictions:	For Research Use only
---------------	-----------------------

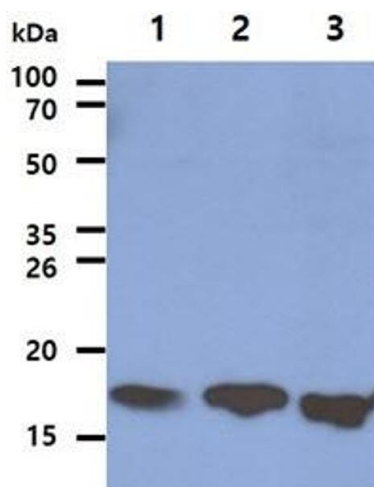
Handling

Format:	Liquid
---------	--------



Immunofluorescence

Image 1. ICC/IF analysis of LSM5 in HeLa cells line, stained with DAPI (Blue) for nucleus staining and monoclonal anti-human LSM5 antibody (1:100) with goat anti-mouse IgG-Alexa fluor 488 conjugate (Green).



Western Blotting

Image 2. The Cell lysates (40ug) were resolved by SDS-PAGE, transferred to PVDF membrane and probed with anti-human LSM5 antibody (1:1000). Proteins were visualized using a goat anti-mouse secondary antibody conjugated to HRP and an ECL detection system. Lane 1. : HeLa cell lysate Lane 2. : K562 cell lysate Lane 3. : Jurkat cell lysate