

Datasheet for ABIN5776212

**anti-BPGM antibody****2** Images[Go to Product page](#)

## Overview

Quantity:	100 µL
Target:	BPGM
Reactivity:	Human
Host:	Mouse
Clonality:	Monoclonal

## Product Details

Clone:	AT2E11
Characteristics:	Signal Transduction, Metabolism

## Target Details

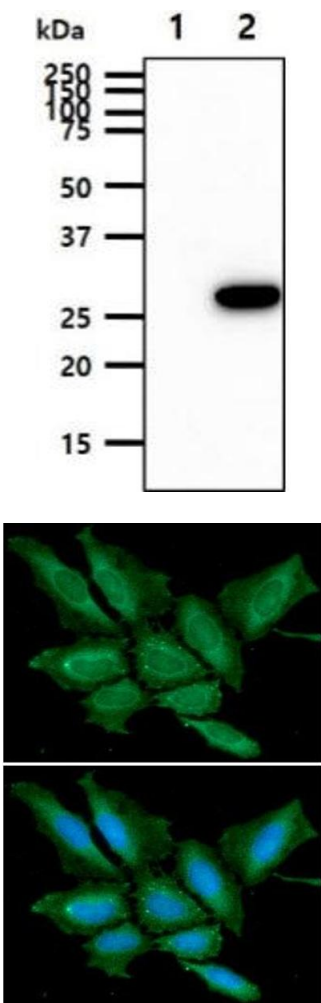
Target:	BPGM
Alternative Name:	BPGM ( <a href="#">BPGM Products</a> )

## Application Details

Restrictions:	For Research Use only
---------------	-----------------------

## Handling

Format:	Liquid
---------	--------



Western Blotting

**Image 1.** The cell lysates (10ug) were resolved by SDS-PAGE, transferred to PVDF membrane and probed with anti-human BPGM antibody (1:1000). Proteins were visualized using a goat anti-mouse secondary antibody conjugated to HRP and an ECL detection system. Lane 1.: 293T cell lysate  
Lane 2.: BPGM transfected 293T cell lysate

Immunofluorescence

**Image 2.** ICC/IF analysis of BPGM in HeLa cells line, stained with DAPI (Blue) for nucleus staining and monoclonal anti-human BPGM antibody (1:100) with goat anti-mouse IgG-Alexa fluor 488 conjugate (Green).