

Datasheet for ABIN577695
anti-Glutathione antibody[Go to Product page](#)

1 Image

Overview

Quantity:	50 µg
Target:	Glutathione
Reactivity:	Please inquire
Host:	Mouse
Clonality:	Monoclonal
Application:	Western Blotting (WB), Immunoprecipitation (IP), Immunoassay (IA)

Product Details

Brand:	AbX™
Immunogen:	Glutathione conjugated to Keyhole Limpet Hemocyanin
Clone:	L4H
Isotype:	IgG2a
Characteristics:	Designed for Immunofluorescence and FACS Analysis Supplied as 50 µg in PBS For use under Non-Reducing conditions
Purification:	Protein A Purified

Target Details

Target:	Glutathione
Abstract:	Glutathione Products

Target Details

Target Type:	Chemical
Background:	Glutathione (GSH) is the highest concentration non-protein thiol in mammalian cells and is present in concentrations of 0.5 to 10 mM. GSH plays a key role in many biological processes, including the synthesis of proteins and DNA, the transport of amino acids, and the protection of cells against oxidation. Harmful hydrogen peroxide cellular levels are minimized by the enzyme glutathione peroxidase (GP) using GSH as a reductant. The oxidized GSH dimer, GSSG, is formed from GSH and peroxide by the GP reaction. An important role of GSSG in the NFkB activating signal cascade is suggested by the fact that the potent NFkB inducer TPA increases intracellular GSSG levels and GSSG/GSH ratios. The AbX™ Glutathione Mouse Monoclonal Antibody is produced as a Protein A purified antibody. It will measure GSH-protein complexes under non-reducing conditions.

Application Details

Application Notes:	Western blotting, Immunoassay, and Immunoprecipitation Western blotting, 1:1,000 151119 AbX™ Anti-Glutathione Mouse Monoclonal Detection of protein-glutathione adducts on Western Blot under non-reducing conditions. PTP-1B refers to phosphotyrosine phosphatase 1B HeLa cells incubated with Glutathione monoclonal, clone L4H, at a 1:100 dilution, counterstained with FITC- labeled goat anti-mouse IgG. Red nuclear stain is DAPI.
Comment:	Applications include Western blotting, Immunoassay and Immunoprecipitation Supplied in PBS with no carrier protein For use under Non-Reducing conditions
Restrictions:	For Research Use only

Handling

Format:	Liquid
Concentration:	100 µg/mL
Buffer:	Phosphate Buffered Saline at pH 7.2 containing 0.09 % Sodium Azide
Preservative:	Sodium azide
Precaution of Use:	WARNING: Reagents contain sodium azide. Sodium azide is very toxic if ingested or inhaled. Avoid contact with skin, eyes, or clothing. Wear eye or face protection when handling. If skin or eye contact occurs, wash with copious amounts of water. If ingested or inhaled, contact a physician immediately. Sodium azide yields toxic hydrazoic acid under acidic conditions. Dilute

Handling

	azide-containing compounds in running water before discarding to avoid accumulation of potentially explosive deposits in lead or copper plumbing.
Storage:	4 °C
Storage Comment:	Short Term: 4°C. Extended: Aliquot and freeze at -20°C

Images

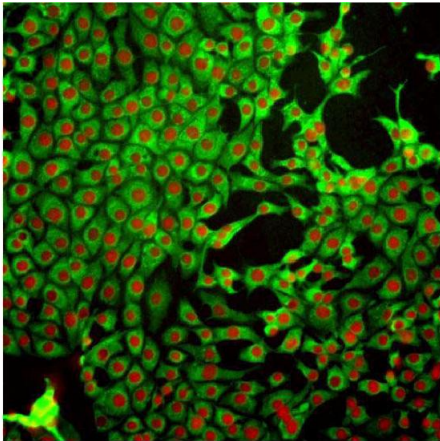


Image 1.