

Datasheet for ABIN5852935
EHF Protein (AA 1-300) (His tag)



[Go to Product page](#)

1 Image

Overview

Quantity:	50 µg
Target:	EHF
Protein Characteristics:	AA 1-300
Origin:	Human
Source:	Escherichia coli (E. coli)
Protein Type:	Recombinant
Purification tag / Conjugate:	This EHF protein is labelled with His tag.
Application:	SDS-PAGE (SDS)

Product Details

Sequence: MGSSHHHHHH SSSLVPRGSH MGSMILEGGG VMNLNPGNNL LHQPPAWTDS YSTCNVSSGF
FGGQWHEIHP QYWTKYQVWE WLQHLLDTNQ LDANCIPFQE FDINGEHLCS MSLQEFTRAA
GTAGQLLYSN LQHLKWNGQC SSDLFQSTHN VIVKTEQTEP SIMNTWKDEN YLYDTNYGST
VDLLDSKTFC RAQISM TTTTS HLPVAESPDM KKEQDPPAKC HTKKHNPRGT HLWEFIRDIL
LNPDKNPGLI KWEDRSEGVF RFLKSEAVAQ LWGKKKNSS MTYEKLSRAM RYYYYKREILE
RVDGRRLVYK FGKNARGWRE NEN

Purity: > 90 % by SDS - PAGE

Target Details

Target: EHF

Alternative Name: [EHF \(EHF Products\)](#)

Target Details

Background: ETS homologous factor isoform 2, also known as EHF, is a distinct member of the ESE subfamily of Ets transcription factors. Ets factors constitute one important class of transcriptional regulators that play critical roles in hema-topoiesis, angiogenesis, organogenesis, oncogenesis and specification of neuronal connectivity. It is exclusively expressed in a subset of epithelial cells, with highest expression detected in glandular epithelium of the prostate, pancreas, salivary gland and trachea. EHF transactivates the c-Met promoter via three high affinity binding sites, which suggests that EHF may contribute to branching morphogenesis. Recombinant human EHF protein, fused to His-tag at N-terminus, was expressed in E.coli.

Molecular Weight: 37.3 kDa (323aa)

NCBI Accession: [NP_036285](#)

UniProt: [Q9NZC4](#)

Application Details

Application Notes: Optimal working dilution should be determined by the investigator.

Comment: Denatured

Restrictions: For Research Use only

Handling

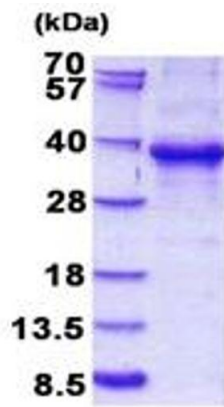
Format: Liquid

Concentration: 1 mg/mL

Buffer: Liquid. In 20 mM Tris-HCl buffer (pH 8.0) containing 0.4M urea, 10 % glycerol

Storage: 4 °C,-20 °C,-80 °C

Storage Comment: Can be stored at +4C short term (1-2 weeks). For long term storage, aliquot and store at -20C or -70C. Avoid repeated freezing and thawing cycles.



15% SDS-PAGE (3ug)

SDS-PAGE

Image 1.