

Datasheet for ABIN5852938

K-RAS Protein (AA 1-186) (His tag)[Go to Product page](#)**1** Image

Overview

Quantity:	100 µg
Target:	K-RAS (KRAS)
Protein Characteristics:	AA 1-186
Origin:	Human
Source:	Escherichia coli (E. coli)
Protein Type:	Recombinant
Purification tag / Conjugate:	This K-RAS protein is labelled with His tag.
Application:	SDS-PAGE (SDS)

Product Details

Sequence:	MGSSHHHHHH SSSLVPRGSH MGSMTKEYKL VVVGAGGVGK SALTQLIQN HFVDEYDPTI EDSYRKQVVI DGETCLLDIL DTAGQEEYSA MRDQYMRTGE GFLCVFAINN TKSFEDIHHY REIQKRVKDS EDVPMVLVGN KCDLPSRTVD TKQAQDLARS YGIPFIETSA KTRQRVEDAF YTLVREIRQY RLKKISKEEK TPGCVKIKKC
Purity:	> 90 % by SDS - PAGE

Target Details

Target:	K-RAS (KRAS)
Alternative Name:	KRAS (KRAS Products)
Target Type:	Viral Protein
Background:	KRAS is a member of the small GTPase superfamily. This protein is implicated in various

Target Details

malignancies, including lung adenocarcinoma, mucinous adenoma, ductal carcinoma of the pancreas and colorectal carcinoma. under normal conditions, Ras family members influence cell growth and differentiation events in a subcellular membrane compartmentalization-based signaling system. Oncogenic Ras can deregulate processes that control both cell proliferation and apoptosis. Recombinant human KRAS protein, fused to His-tag at N-terminus, was expressed in E.coli and purified by using conventional chromatography.

Molecular Weight: 23.8 kDa(210aa) confirmed by MALDI-TOF

NCBI Accession: [NP_203524](#)

UniProt: [P01116](#)

Application Details

Application Notes: Optimal working dilution should be determined by the investigator.

Restrictions: For Research Use only

Handling

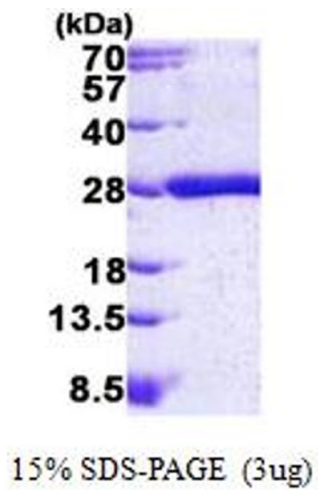
Format: Liquid

Concentration: 0.5 mg/mL

Buffer: Liquid. 20 mM Tris-HCl buffer (pH 8.0) containing 20 % glycerol 0.1M NaCl, 1 mM DTT

Storage: 4 °C,-20 °C,-80 °C

Storage Comment: Can be stored at +4C short term (1-2 weeks). For long term storage, aliquot and store at -20C or -70C. Avoid repeated freezing and thawing cycles.



SDS-PAGE

Image 1.